

JMG Cranes S.p.A.

Sales & Service Office

Via Bergamo, 142

26100 Cremona - Italy

t +39 0372 1786738

Production Plant

Via Sito Nuovo 14

29010 Sarmato (PC) - Italy

t +39 0523 8486

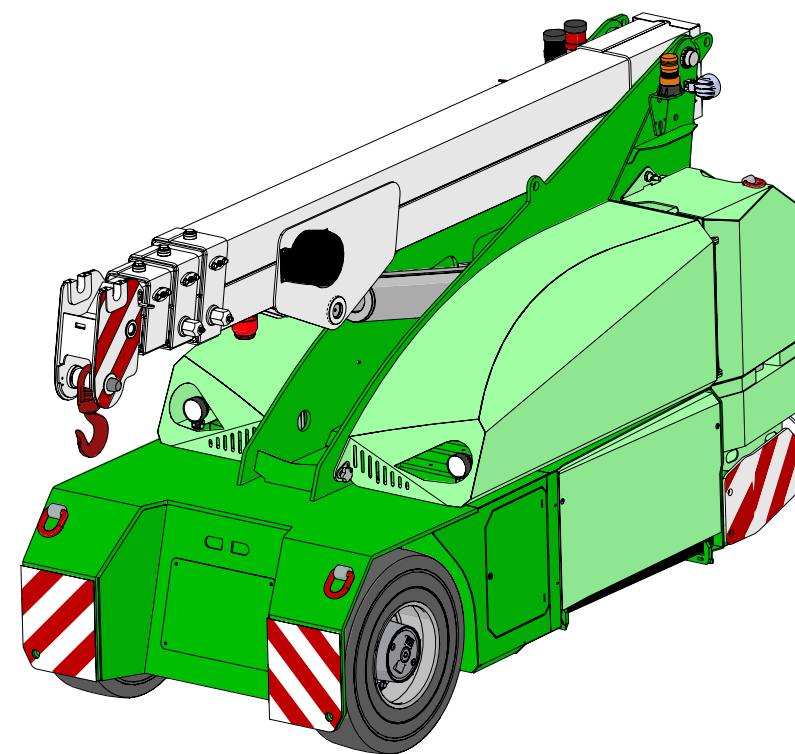
e info@jmgcranes.com



Edition 04/2020 © 2020 JMG Cranes S.p.A. All rights reserved
Data subject to change without prior notice
Rev. 1 - 04/2020



Electric Pick & Carry Cranes



MC 60S (metric)
Max Capacity 6,000 Kg

www.jmgcranes.com

JMG[®]
movetosolution

MC 60S

RADIO-REMOTE CONTROL ON DRIVING, STEERING, BOOM MOVEMENTS,
WINCH AND OTHER ACCESSORIES

FRONT-WHEELS DRIVE WITH COUNTER ROTATION

REMOVABLE COUNTERWEIGHTS

HYDRAULICALLY TELESCOPING
SEQUENTIAL TYPE BOOM

Options :



- HYDRAULIC WINCH
- HYDRAULIC FLY JIB
- BENDABLE MANUAL JIB WITH
MANUAL EXTENSION
- NON-MARKING TIRES
- HYDRAULIC FORKS
- MAN BUCKET
- ATEX CONVERSIONS
- CUSTOMIZED PAINTING

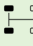






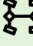
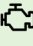


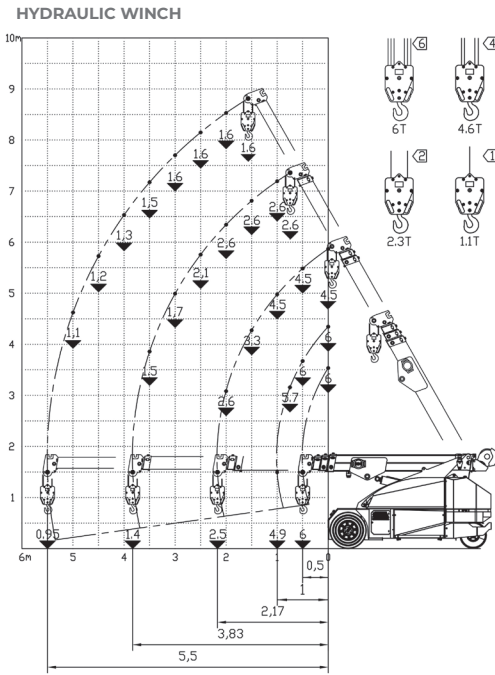
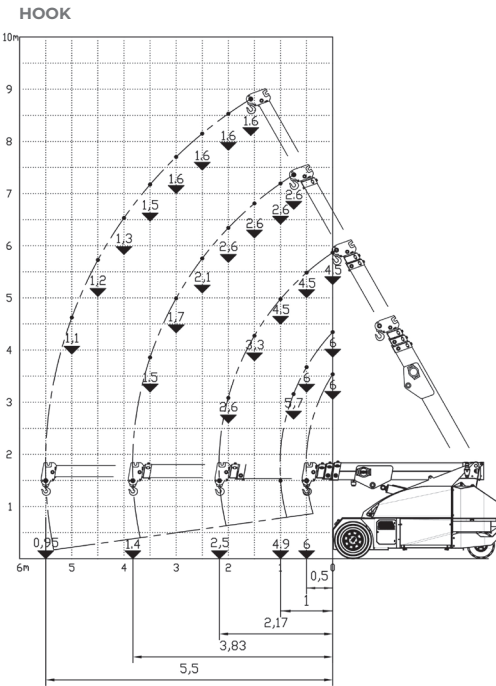
Load charts






Technical features

Max Capacity kg	 6,000
Dimensions mm	 3195x1380x1845

 Front-wheels drive. 2 electric motors AC 3,5 kW 72V Insulation class H	L.M.I. Electronic safe load indicator and tilting moment limiter
 Total Kg. 6,900 Removable counterweights Kg. 1,900	 Automatic braking system on all wheels
 72 V - 640 Ah 8 working hours	 Fabricated from preformed and welded quality steel plate
 Front nr. 2 superelastic 250-15" Rear nr. 2 superelastic 21x8-9"	 +60°/-15°
 Rear Steering angle -90°/+90°	 Motor driven pump 12 kW - 72 V AC, Insulation class H



EU Standards CE

	UNI ISO 4301-2: A1
	2006/42 CE-2014/30 UE- 2014/35 UE- 2000/14 e and subsequent modifications
	EN 13000:2014 ANSI/ASME B30.5-2011 and subsequent modifications



Dimensions

