

JMG Cranes S.p.A.

Sales & Service Office

Via Bergamo, 142

26100 Cremona - Italy

t +39 0372 1786738

Production Plant

Via Sito Nuovo 14

29010 Sarmato (PC) - Italy

t +39 0523 8486

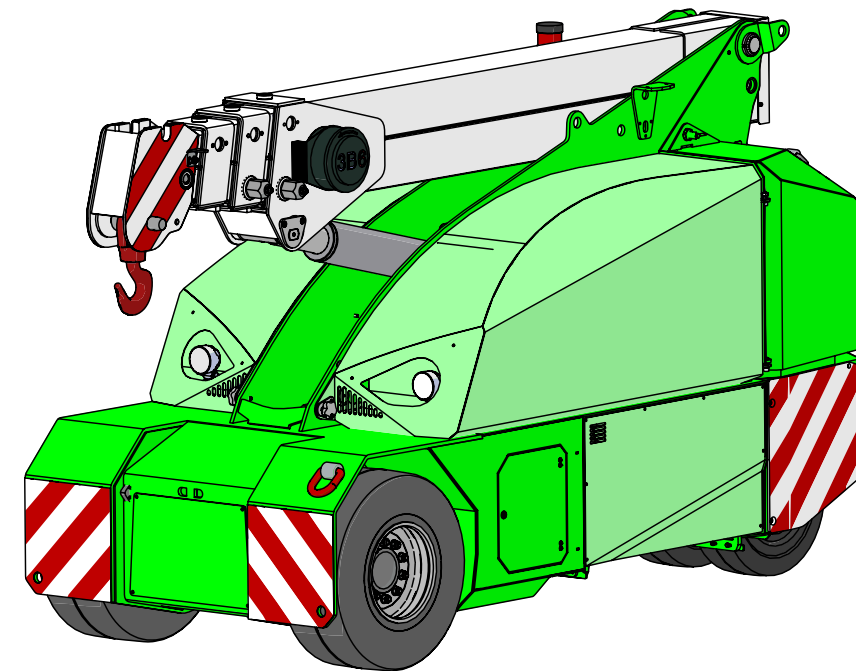
e info@jmgcranes.com



Data subject to change without prior notice
Edition 04/2020 © 2020 JMG Cranes S.p.A. All rights reserved
Rev. 1 - 04/2020



Electric Pick & Carry Cranes



MC 45S (metric)
Max Capacity 4,500 Kg

www.jmgcranes.com

JMG[®]
move to solution

MC 45S


RADIO-REMOTE CONTROL ON DRIVING, STEERING, BOOM MOVEMENTS,
WINCH AND OTHER ACCESSORIES

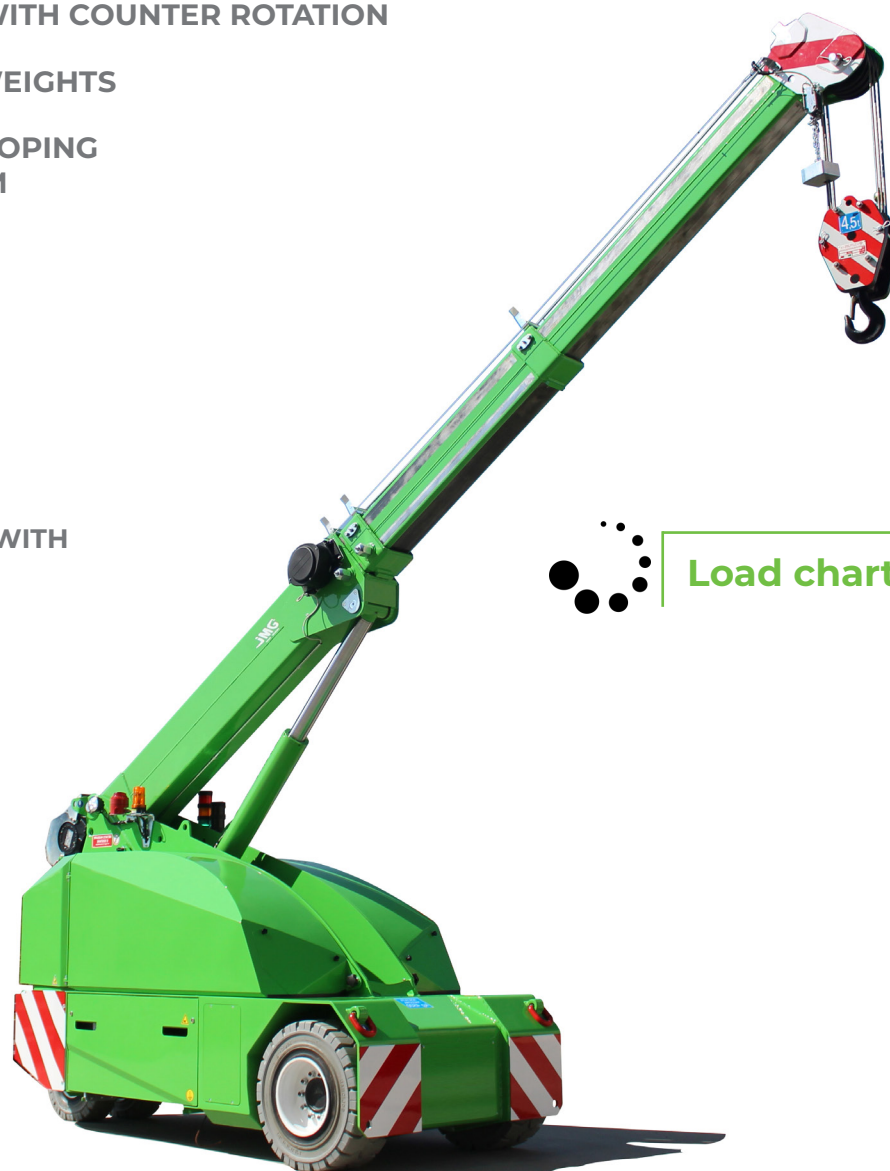
FRONT-WHEELS DRIVE WITH COUNTER ROTATION

REMOVABLE COUNTERWEIGHTS

HYDRAULICALLY TELESCOPING
SEQUENTIAL TYPE BOOM

Options :

- HYDRAULIC WINCH
- HYDRAULIC FLY JIB
- BENDABLE MANUAL JIB WITH
MANUAL EXTENSION
- NON-MARKING TIRES
- HYDRAULIC FORKS
- MAN BUCKET
-  ATEX CONVERSIONS
- CUSTOMIZED PAINTING



Load charts



Technical features

Max
Capacity
kg

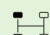






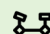



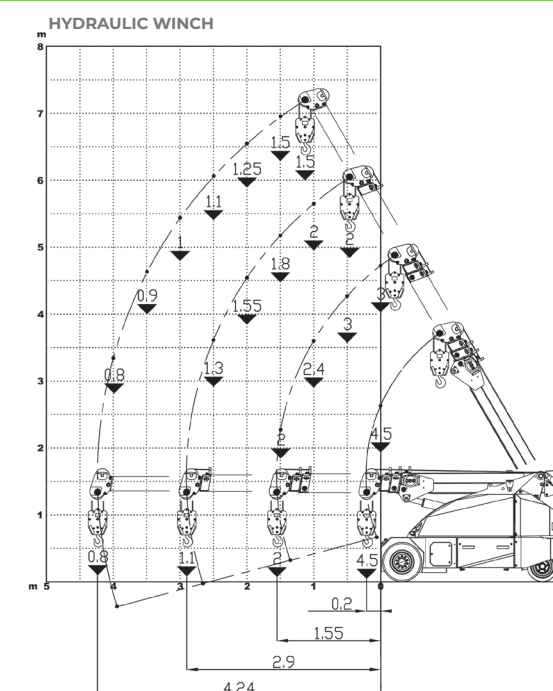
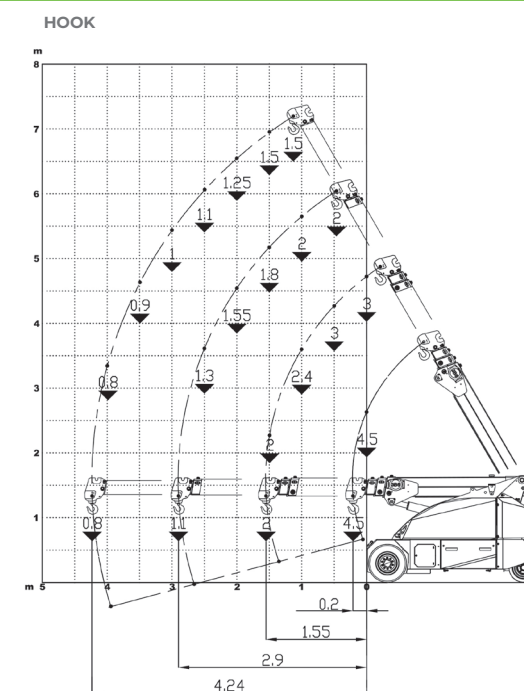
4,500

Dimensions
mm






2775x1200x1648

	Front-wheels drive. 2 electric motors AC 3 kW 48V Insulation class H	LMI.	Electronic safe load indicator and tilting moment limiter
	Total Kg. 4,900 Removable counterweights Kg.1,360		Automatic braking system on all wheels
	48 V - 600 Ah 8 working hours		Fabricated from preformed and welded quality steel plate
	Front nr. 2 superelastic 23x10-12" Rear nr. 2 superelastic 18x7-8"		+60°/-15°
	Rear Steering angle -90°/+90°		Motor driven pump 9 kW - 48 V AC, Insulation class H



EU Standards CE

	UNI ISO 4301-2: A1
	2006/42 CE-2014/30 UE- 2014/35 UE- 2000/14 e and subsequent modifications
	EN 13000:2014 ANSI/ASME B30.5-2011 and subsequent modifications



Dimensions

