

## JMG Cranes S.p.A.

Sales & Service Office

Via Bergamo, 142

26100 Cremona - Italy

t +39 0372 1786738

Production Plant

Via Sito Nuovo 14

29010 Sarmato (PC) - Italy

t +39 0523 8486

e [info@jmgcranes.com](mailto:info@jmgcranes.com)



[www.jmgcranes.com](http://www.jmgcranes.com)

Data subject to change without prior notice  
Edition 04/2020 © 2020 JMG Cranes S.p.A. All rights reserved  
Rev. 1 - 04/2020



## Electric Pick & Carry Cranes



**MC 450S (metric)**

**Max Capacity  
45.000 kg**

**JMG<sup>®</sup>**  
move to solution

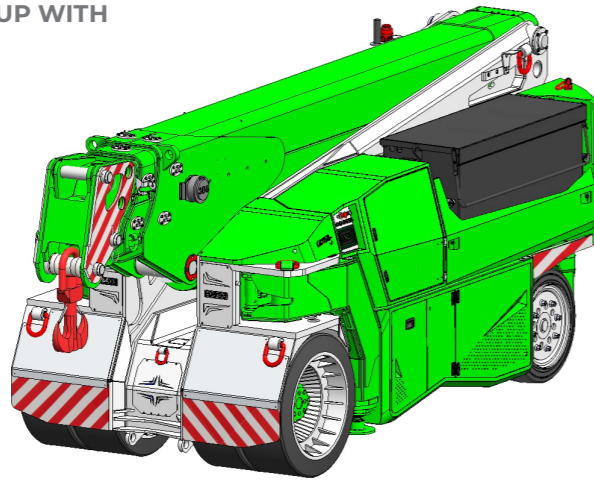
# MC 450S

FRONT-WHEELS DRIVE WITH COUNTER ROTATION

HYDRAULICALLY TELESCOPING PROPORTIONAL TYPE BOOM

180° REAR STEERING

EXTENDIBLE REAR GROUP WITH  
REMOVABLE BALLASTS



## Options :

- HYDRAULIC WINCH
- HYDRAULIC JIB
- BENDABLE MANUAL JIB WITH  
MANUAL EXTENSION
- NON-MARKING TIRES
- FOLDABLE OUTRIGGERS
- HYDRAULIC FORKS
- MAN BUCKET
- **Ex** ATEX CONVERSIONS
- CUSTOMIZED PAINTING

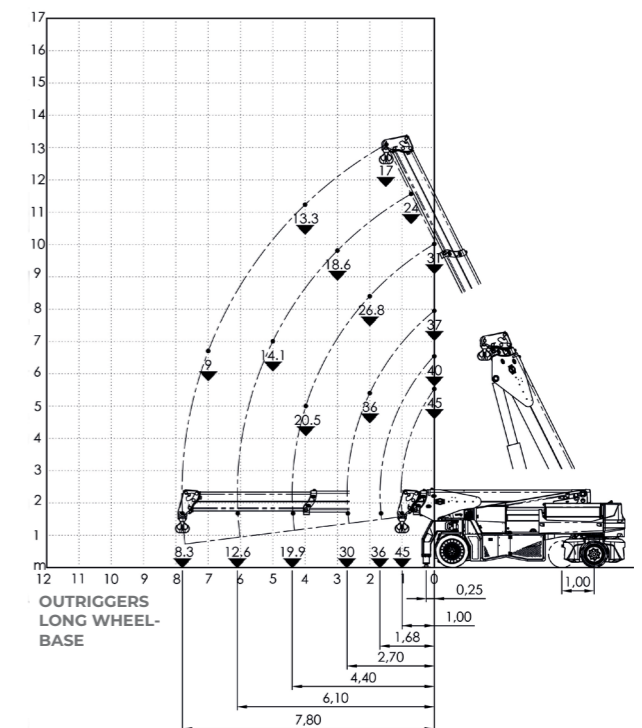
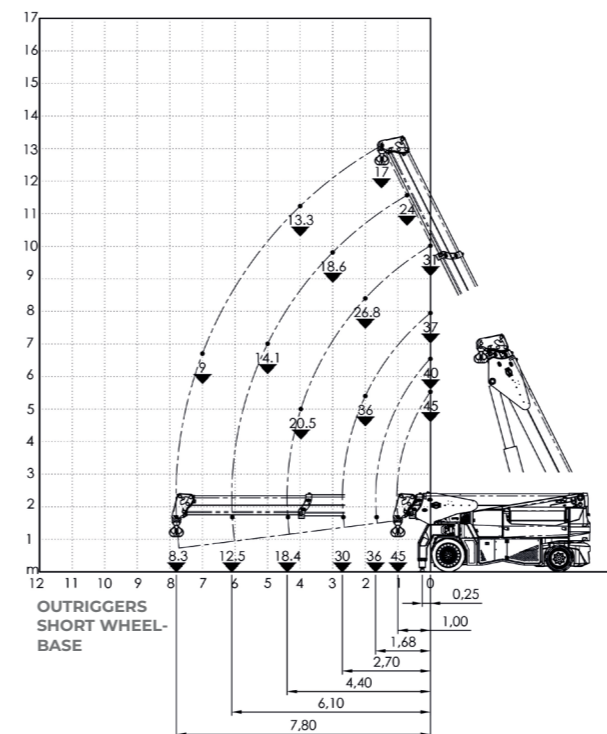
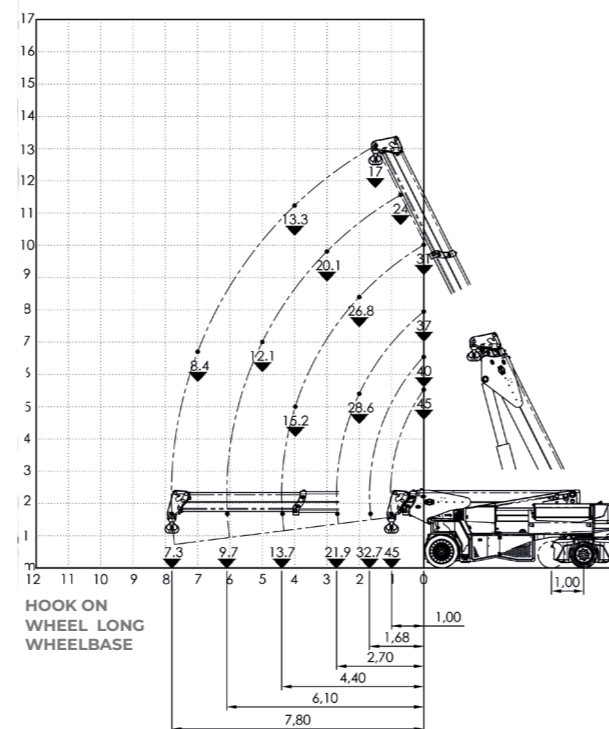
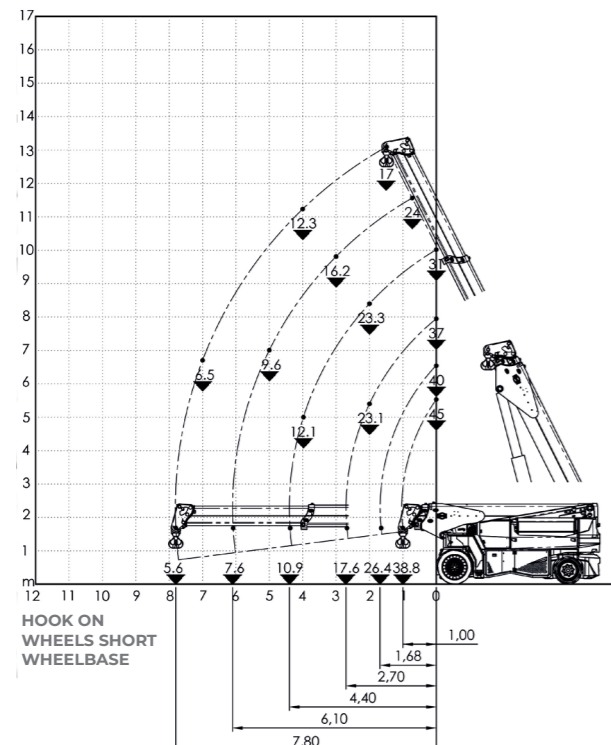


## Technical features

Max Capacity kg	45.000
Dimensions mm	4900x2200x2415

Front-wheels drive. 2 electric motors AC 16 kW 96V. Insulation class H	<b>LMI.</b> Electronic safe load indicator and tilting moment limiter
TotalKg. 36,700 Removable counterweights Kg. 10,600	Automatic braking system on all wheels
96 V - 1550 Ah 8 working hours	Fabricated from preformed and welded quality steel plate
Front nr. 4 superelastic 40x16-30" Rear nr. 4 superelastic 355/50-15"	+63°/-5°
Rear Steering angle -90°/+90°	Motor driven pump 1x35 kW - 96 V AC, 1x23 kW - 96 AC.

## Load charts



## EU Standards CE

	UNI ISO 4301-2: A1
	2006/42 CE-2014/30 UE- 2014/35 UE- 2000/14 and subsequent modifications
	EN 13000:2014 ANSI/ASME B30.5-2011 and subsequent modifications



## Dimension

