

## JMG Cranes S.p.A.

Sales & Service Office

Via Bergamo, 142

26100 Cremona - Italy

t +39 0372 1786738

Production Plant

Via Sito Nuovo 14

29010 Sarmato (PC) - Italy

t +39 0523 8486

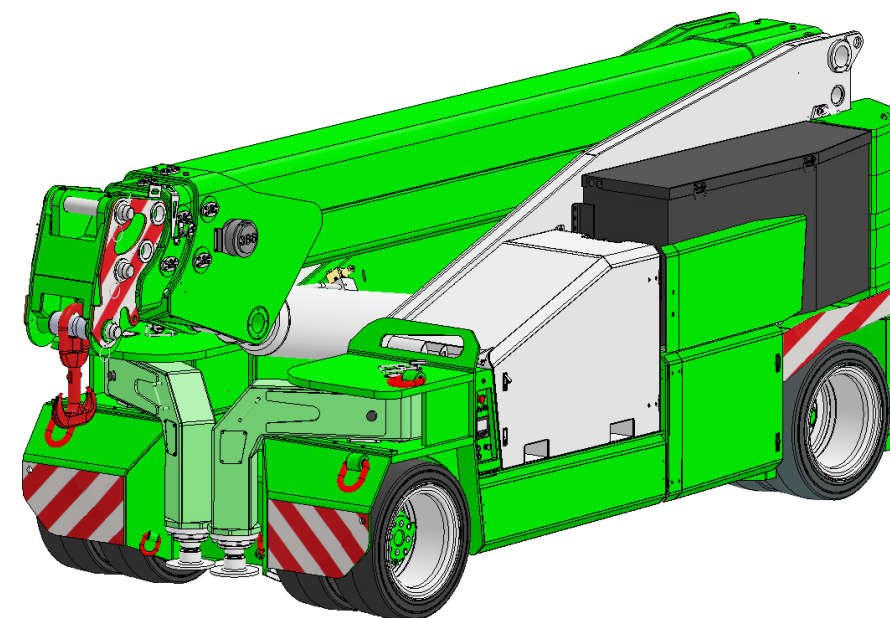
e [info@jmgcranes.com](mailto:info@jmgcranes.com)



Data subject to change without prior notice  
Edition 04/2020 © 2020 JMG Cranes S.p.A. All rights reserved  
Rev. 1 - 04/2020



## Electric Pick & Carry Cranes



**MC 350S (metric)**

**Max Capacity  
35,000 kg**

[www.jmgcranes.com](http://www.jmgcranes.com)

**JMG<sup>®</sup>**  
move to solution

# MC 350S


FRONT-WHEELS DRIVE WITH COUNTER ROTATION

HYDRAULICALLY TELESCOPING PROPORTIONAL TYPE BOOM

REMOVABLE COUNTERWEIGHTS

180° REAR STEERING

## Options :



- HYDRAULIC WINCH
- HYDRAULIC JIB
- BENDABLE MANUAL JIB WITH MANUAL EXTENSION
- NON-MARKING TIRES
- FRONT OUTRIGGERS
- HYDRAULIC FORKS
- MAN BUCKET
-  ATEX CONVERSIONS
- CUSTOMIZED PAINTING

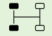










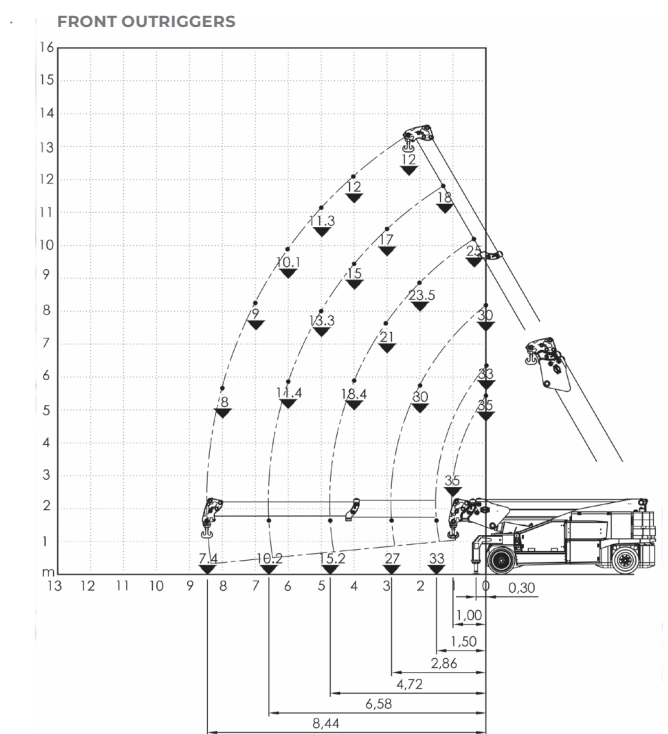
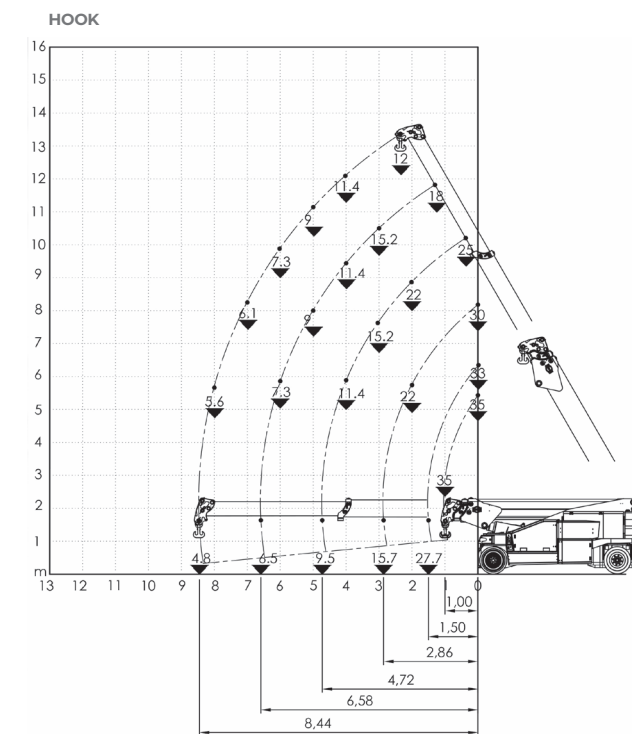
## Load charts





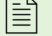
## Technical features

|                 |  |
|-----------------|--|
| Max Capacity kg |  35,000         |
| Dimensions mm   |  5170x2250x2295 |

|   |   |   |   |
|---|---|---|---|
|  | Front-wheels drive.<br>2 electric motors AC 12 kW 96V<br>Insulation class H | LMI   | Electronic safe load indicator and<br>tilting moment limiter  |
|  | Total Kg. 30,500<br>Removable counterweights Kg. 8,700                      |  | Hydraulically foot controlled service brake on all wheels, hydraulically automatic or button controlled parking brake on front wheels |
|  | 96 V - 1395 Ah<br>8 working hours   |  | Fabricated from preformed and welded quality steel plate  |
|  | Front nr. 4 superelastic 355/50-20"<br>Rear nr. 4 superelastic 355/50-20"   |  | +65°/-3°  |
|  | Rear<br>Steering angle -90°/+90°  |  | Motor driven pump<br>1x35 kW - 96 V AC, 1x23 kW - 96 AC.  |



## EU Standards CE

|   |   |
|---|---|
|  | UNI ISO 4301-2: A1  |
|  | 2006/42 CE-2014/30 UE-<br>2014/35 UE- 2000/14<br>e and subsequent modifications |
|  | EN 13000:2014 ANSI/ASME B30.5-2011<br>and subsequent modifications              |



## Dimensions

