

JMG Cranes S.p.A.

Sales & Service Office

Via Bergamo, 142

26100 Cremona - Italy

t +39 0372 1786738

Production Plant

Via Sito Nuovo 14

29010 Sarmato (PC) - Italy

t +39 0523 8486

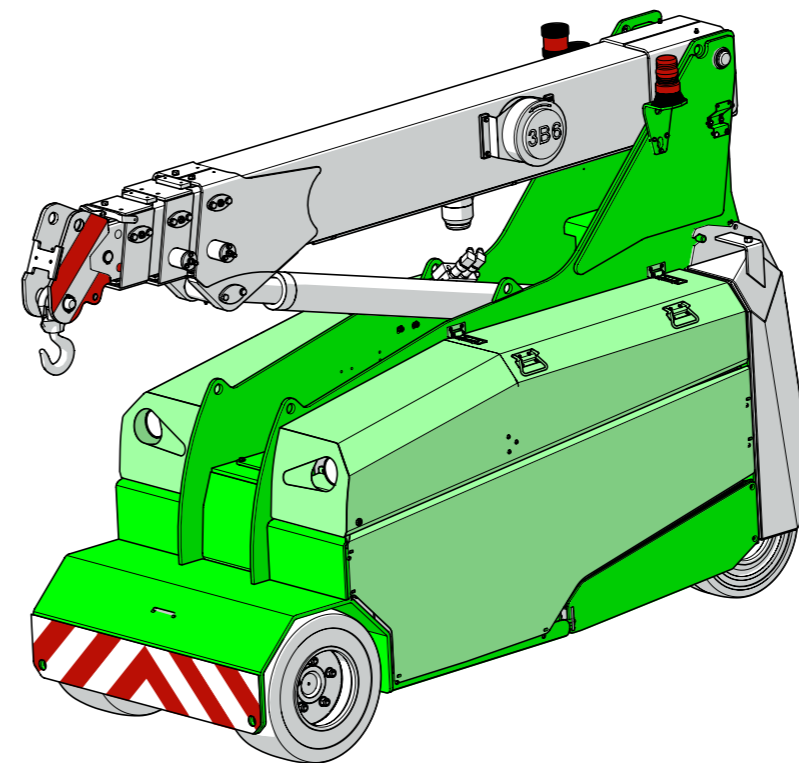
e info@jmgcranes.com



Data subject to change without prior notice
Edition 04/2020 © 2020 JMG Cranes S.p.A. All rights reserved
Rev. 1 - 04/2020



Electric Pick & Carry Cranes



MC 32S (metric)
Max Capacity 3,200 Kg

www.jmgcranes.com

JMG[®]
move to solution

MC 32S


RADIO-REMOTE CONTROL ON DRIVING, STEERING, BOOM MOVEMENTS, WINCH AND OTHER ACCESSORIES

FRONT-WHEELS DRIVE WITH COUNTER ROTATION

REMOVABLE COUNTERWEIGHTS

HYDRAULICALLY TELESCOPING SEQUENTIAL TYPE BOOM

Options :



- HYDRAULIC WINCH
- HYDRAULIC FLY JIB
- MANUAL FLY JIB WITH EXTENSION
- NON-MARKING TIRES
- HYDRAULIC FORKS
- MAN BUCKET
-  ATEX CONVERSIONS
- CUSTOMIZED PAINTING

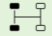










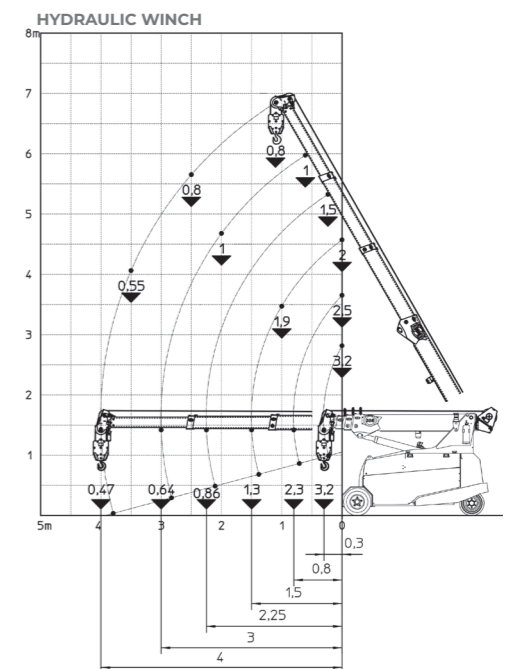
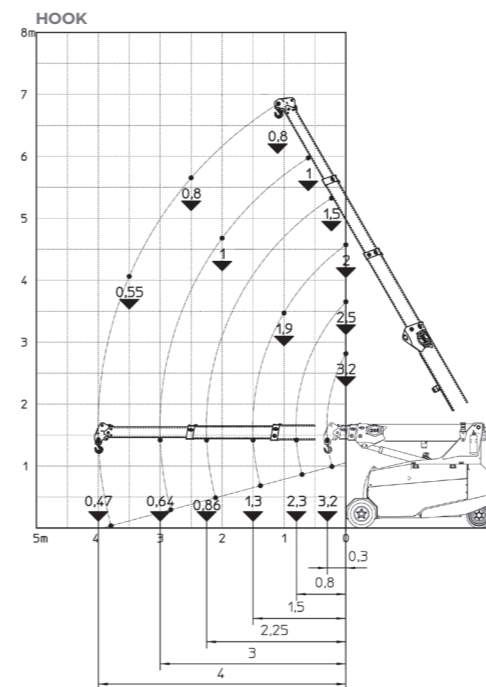
Load charts





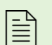
Technical features

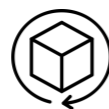
Max Capacity kg	 3,200
Dimensions mm	 2430x980x1696

 Front-wheels drive. 2 electric motors AC 3 kW 48V Insulation class H	LMI. Electronic safe load indicator and tilting moment limiter
 Total Kg. 3,400 Removable counterweights Kg. 700	 Automatic braking system on all wheels
 48 V - 500 Ah 8 working hours	 Fabricated from preformed and welded quality steel plate
 Front nr. 2 superelastic 200/50-10" Rear nr. 2 superelastic 16x6-8"	 +60°/-15°
 Rear Steering angle -90°/+90°	 Motor driven pump 9 kW - 48 V AC, Insulation class H



EU Standards CE

	UNI ISO 4301-2: A1
	2006/42 CE-2014/30 UE-2014/35 UE- 2000/14 e and subsequent modifications
	EN 13000:2014 ANSI/ASME B30.5-2011 and subsequent modifications



Dimensions

