

## JMG Cranes S.p.A.

Sales & Service Office

Via Bergamo, 142

26100 Cremona - Italy

t +39 0372 1786738

Production Plant

Via Sito Nuovo 14

29010 Sarmato (PC) - Italy

t +39 0523 8486

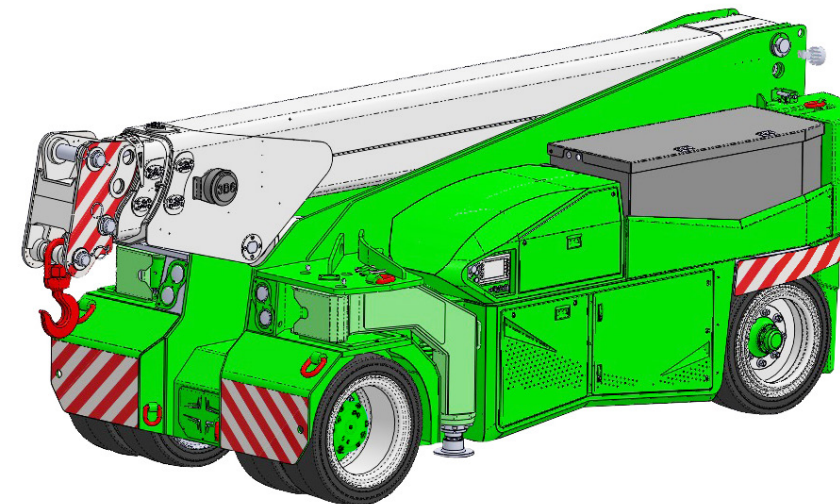
e [info@jmgcranes.com](mailto:info@jmgcranes.com)



Data subject to change without prior notice  
Edition 04/2020 © 2020 JMG Cranes S.p.A. All rights reserved  
Rev. 1 - 04/2020



## Electric Pick & Carry Cranes



**MC 180S (metric)**  
Max Capacity 18,000 Kg

[www.jmgcranes.com](http://www.jmgcranes.com)

**JMG**<sup>®</sup>  
move to solution

# MC 180S

RADIO-REMOTE CONTROL ON DRIVING, STEERING, BOOM MOVEMENTS,  
WINCH AND OTHER ACCESSORIES


FRONT-WHEELS DRIVE WITH COUNTER ROTATION

REMOVABLE COUNTERWEIGHTS

HYDRAULICALLY TELESCOPING  
PROPORTIONAL TYPE BOOM

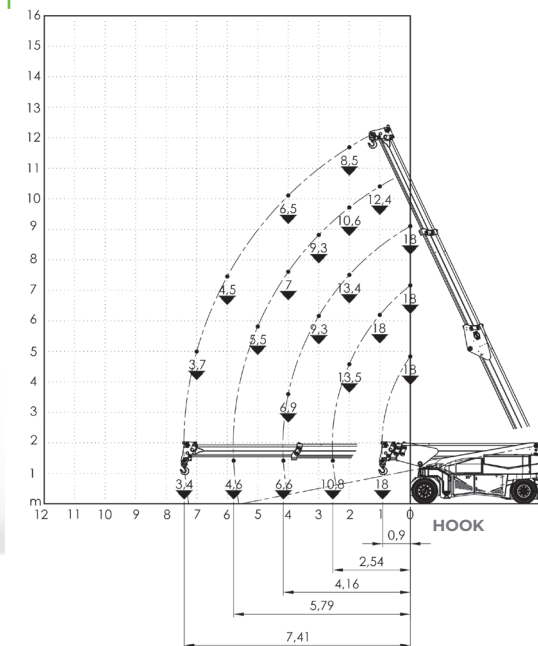
FRONT COMPASS TYPE OUTRIGGERS

## Options :

- HYDRAULIC WINCH
- HYDRAULIC JIB WITH HYDRAULIC EXTENSION
- BENDABLE MANUAL JIB WITH MANUAL EXTENSION
- NON-MARKING TIRES
- HYDRAULIC FORKS
- MAN BUCKET
-  ATEX CONVERSIONS
- CUSTOMIZED PAINTING



## Load charts



## Technical features

Max Capacity kg

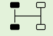










18,000

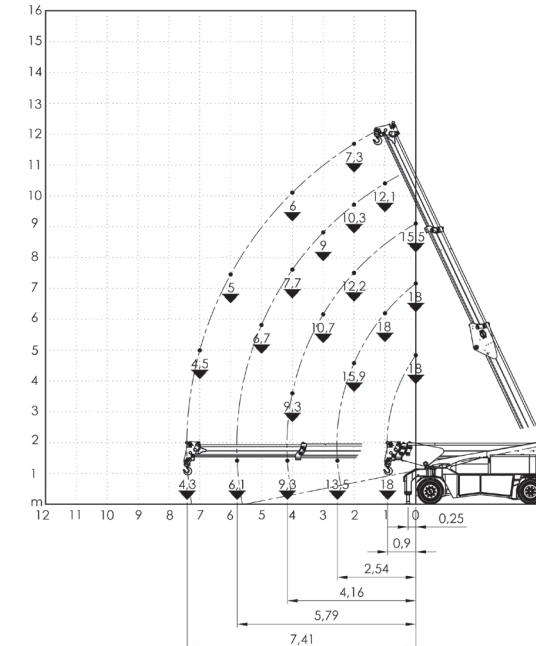
Dimensions mm



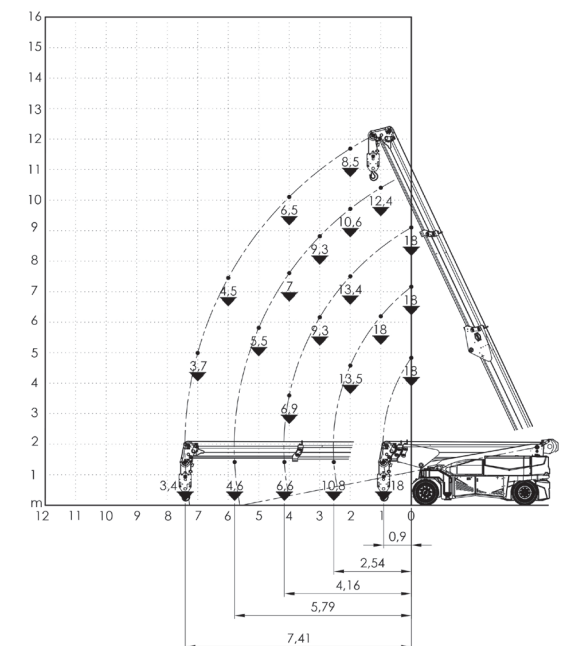
4535x1990x2000

	Front-wheels drive. 2 electric motors AC 10 kW 96V Insulation class H	<b>LMI.</b>	Electronic safe load indicator and tilting moment limiter
	Total Kg. 21,610 Removable counterweights Kg. 6,110		Automatic braking system on all wheels
	96 V - 1035 Ah 8 working hours		Fabricated from preformed and welded quality steel plate
	Front nr. 4 superelastic 355x50-20" Rear nr. 2 superelastic 355x50-20"		+65°/-6°
	Rear Steering angle -90°/+90°		Motor driven pump N°2 23 kW - 96 V AC, 16 kW - 96 V AC Insulation class H

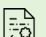


FRONT COMPASS TYPE OUTRIGGERS



HYDRAULIC WINCH



## EU Standards CE

	UNI ISO 4301-2: A1
	2006/42 CE-2014/30 UE- 2014/35 UE- 2000/14 e and subsequent modifications
	EN 13000:2014 ANSI/ASME B30.5-2011 and subsequent modifications



## Dimensions

