

## JMG Cranes S.p.A.

Sales & Service Office

Via Bergamo, 142

26100 Cremona - Italy

t +39 0372 1786738

Production Plant

Via Sito Nuovo 14

29010 Sarmato (PC) - Italy

t +39 0523 8486

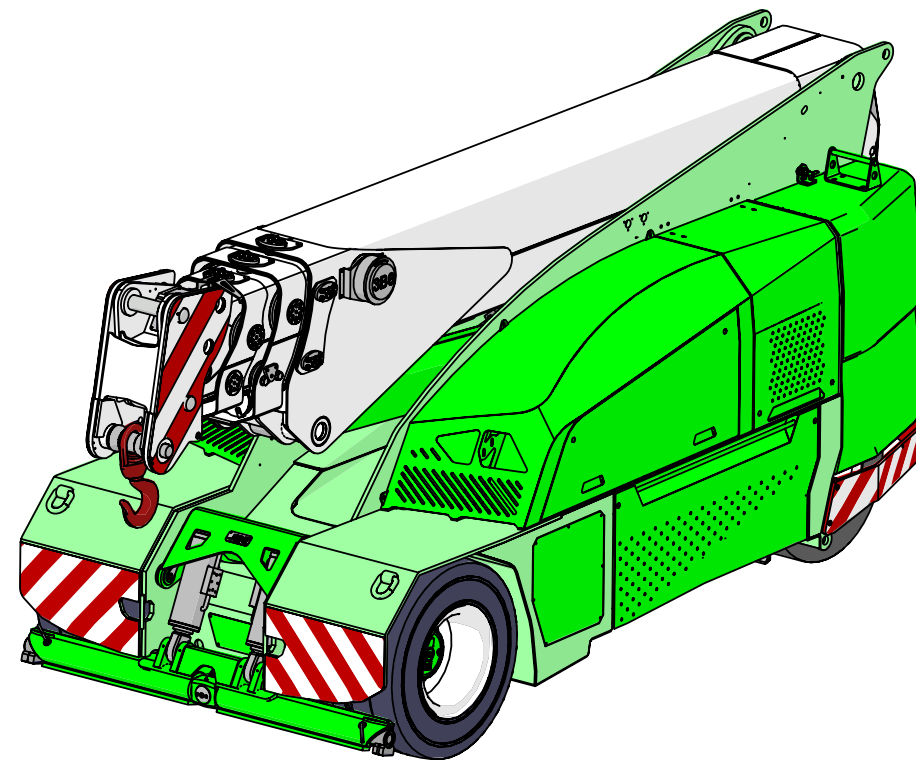
e info@jmgcranes.com



Data subject to change without prior notice  
Edition 04/2020 © 2020 JMG Cranes S.p.A. All rights reserved  
Rev. 1 - 04/2020



## Electric Pick & Carry Cranes



**MC 130S (metric)**  
Max Capacity 13,000 Kg

[www.jmgcranes.com](http://www.jmgcranes.com)

**JMG**<sup>®</sup>  
move to solution

# MC 130S

RADIO-REMOTE CONTROL ON DRIVING, STEERING, BOOM MOVEMENTS,  
WINCH AND OTHER ACCESSORIES

FRONT-WHEELS DRIVE WITH COUNTER ROTATION

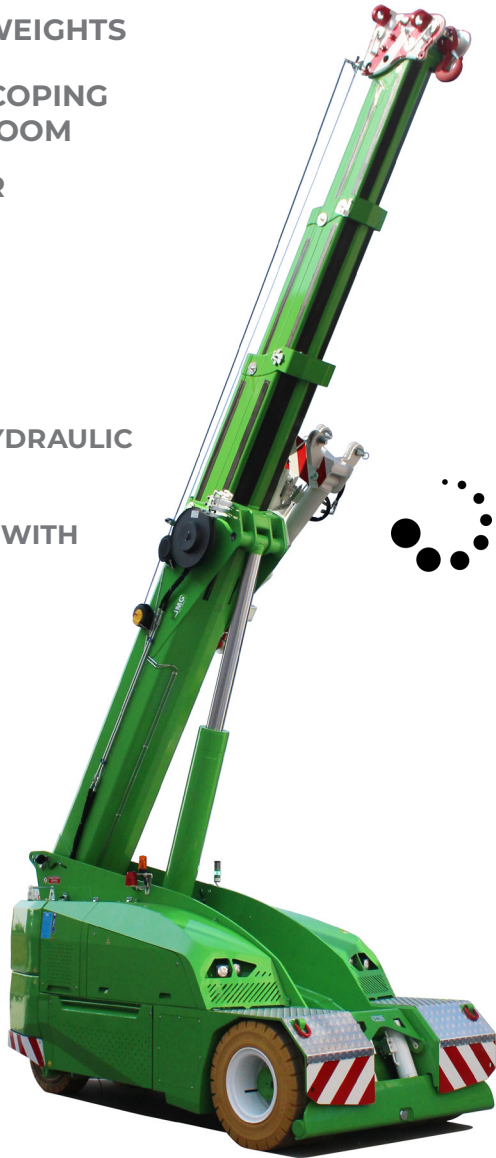
REMOVABLE COUNTERWEIGHTS

HYDRAULICALLY TELESCOPING  
PROPORTIONAL TYPE BOOM

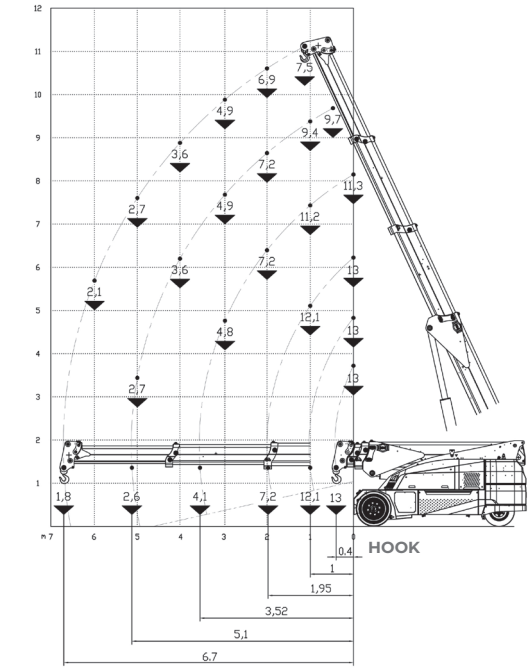
FRONT STABILISING BAR

**Options :**



- HYDRAULIC WINCH
- HYDRAULIC JIB WITH HYDRAULIC  
EXTENSION
- BENDABLE MANUAL JIB WITH  
MANUAL EXTENSION
- NON-MARKING TIRES
- HYDRAULIC FORKS
- MAN BUCKET
-  ATEX CONVERSIONS
- CUSTOMIZED PAINTING

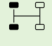






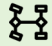



### Load charts

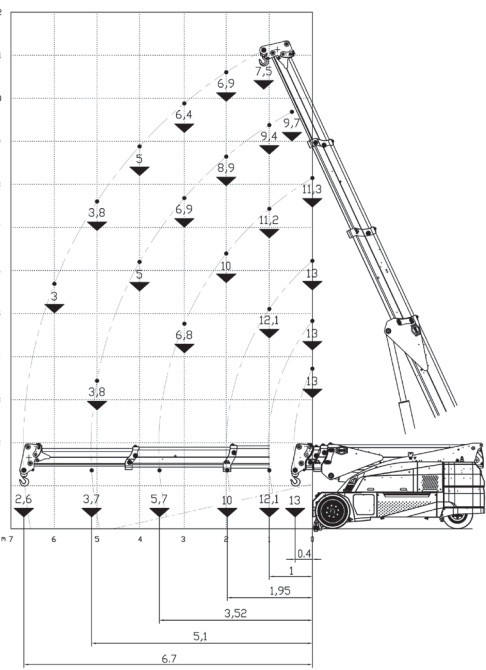


### Technical features

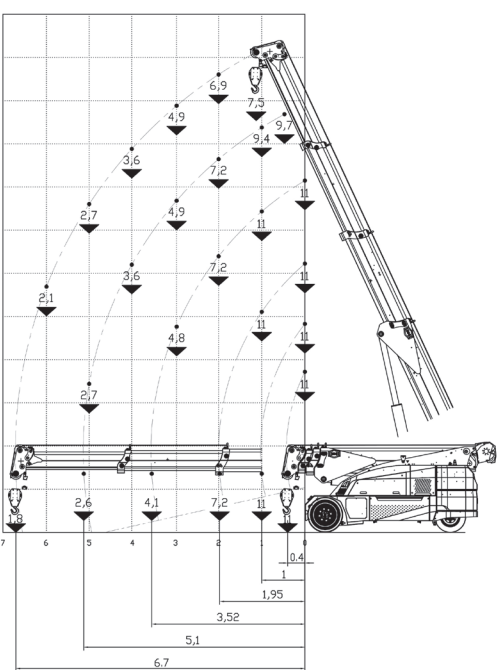
|                 |  |
|-----------------|--|
| Max Capacity kg |  13,000         |
| Dimensions mm   |  4030x1850x1990 |

|  |   |
|--|---|
|  Front-wheels drive.<br>2 electric motors AC 8,5 kW 80V<br>Insulation class H | <b>LMI.</b> Electronic safe load indicator and<br>tilting moment limiter  |
|  Total Kg. 14,500<br>Removable counterweights Kg. 4,000                       |  Automatic braking system on all<br>wheels                   |
|  80 V - 900 Ah<br>8 working hours   |  Fabricated from preformed<br>and welded quality steel plate |
|  Front nr. 4 superelastic 300-15"<br>Rear nr. 2 superelastic 250-15"          |  +65°/-5°  |
|  Rear<br>Steering angle -90°/+90°   |  Motor driven pump<br>23 kW - 96 V AC,<br>Insulation class H |



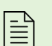
HOOK ON STABILISING BAR



HYDRAULIC WINCH



### EU Standards CE

|   |   |
|---|---|
|  | UNI ISO 4301-2: A1  |
|  | 2006/42 CE-2014/30 UE-<br>2014/35 UE- 2000/14<br>e and subsequent modifications |
|  | EN 13000:2014 ANSI/ASME B30.5-2011<br>and subsequent modifications              |



### Dimensions

