

## JMG Cranes S.p.A.

Sales & Service Office

Via Bergamo, 142

26100 Cremona - Italy

t +39 0372 1786738

Production Plant

Via Sito Nuovo 14

29010 Sarmato (PC) - Italy

t +39 0523 8486

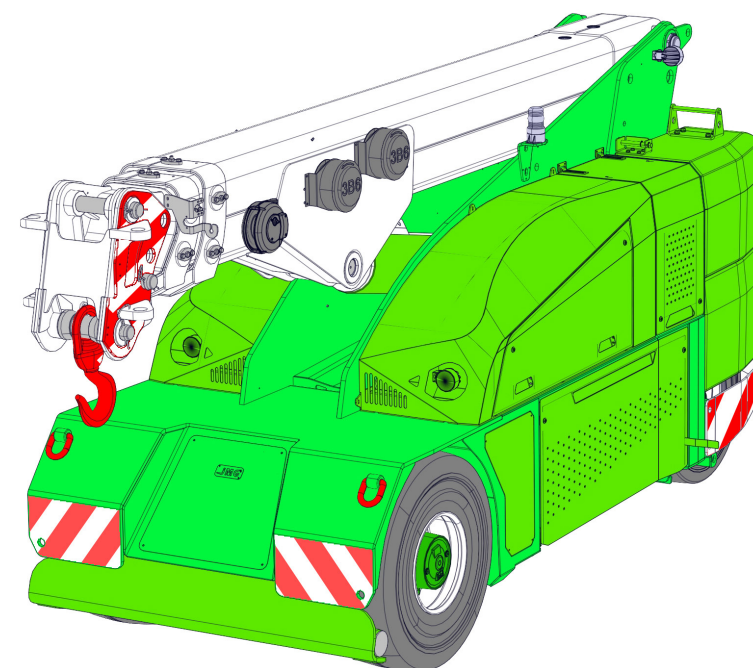
e [info@jmgcranes.com](mailto:info@jmgcranes.com)



Data subject to change without prior notice  
Edition 04/2020 © 2020 JMG Cranes S.p.A. All rights reserved  
Rev. 1 - 04/2020



## Electric Pick & Carry Cranes



**MC 100S (metric)**  
Max Capacity 10,000 Kg

[www.jmgcranes.com](http://www.jmgcranes.com)

**JMG**<sup>®</sup>  
move to solution

# MC 100S

RADIO-REMOTE CONTROL ON DRIVING, STEERING, BOOM MOVEMENTS, WINCH AND OTHER ACCESSORIES


FRONT-WHEELS DRIVE WITH COUNTER ROTATION

REMOVABLE COUNTERWEIGHTS

HYDRAULICALLY TELESCOPING PROPORTIONALLY TYPE BOOM

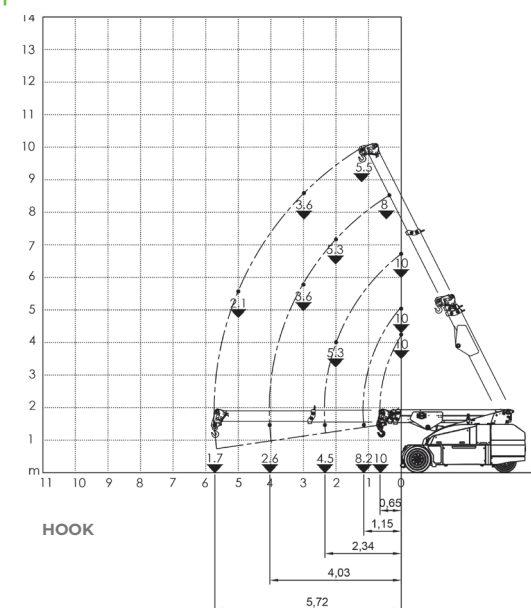
FRONT STABILISING BAR

## Options :

- HYDRAULIC WINCH
- HYDRAULIC JIB WITH HYDRAULIC EXTENSION
- BENDABLE MANUAL JIB WITH MANUAL EXTENSION
- NON-MARKING TIRES
- HYDRAULIC FORKS
- MAN BUCKET
-  ATEX CONVERSIONS
- CUSTOMIZED PAINTING




## Load charts











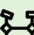

## Technical features

Max Capacity kg

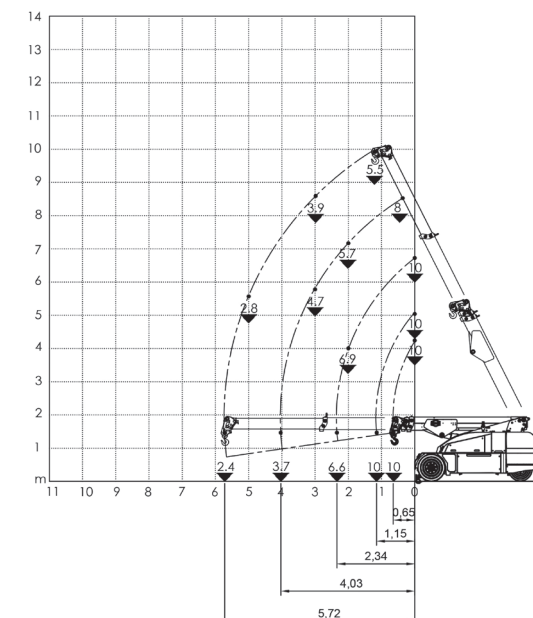
 10,000

Dimensions mm

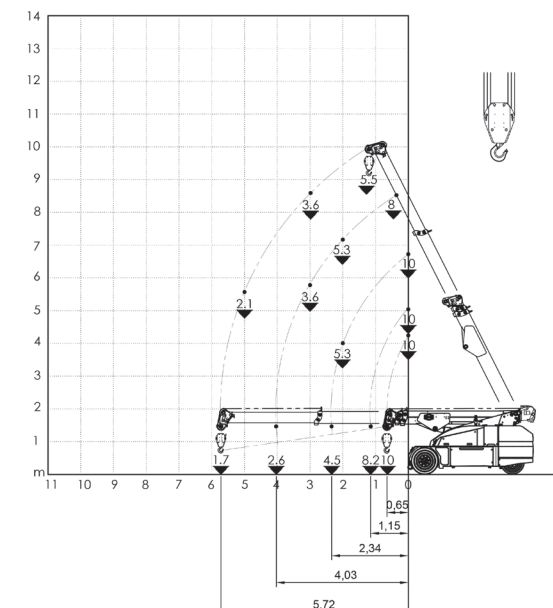
 3800x1500x1949

	Front-wheels drive. 2 electric motors AC 7,5 kW 80V Insulation class H	<b>LMI.</b>	Electronic safe load indicator and tilting moment limiter
	Total Kg. 11,400 Removable counterweights Kg. 4,100		Automatic braking system on all wheels
	80 V - 810 Ah 8 working hours		Fabricated from preformed and welded quality steel plate
	Front nr. 2 superelastic 355-15" Rear nr. 2 superelastic 250-15"		+65°/-10°
	Rear Steering angle -90°/+90°		Motor driven pump 20 kW - 80 V AC, Insulation class H



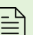
HOOK ON STABILISING BAR

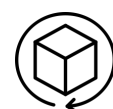


HYDRAULIC WINCH



## EU Standards CE

	UNI ISO 4301-2: A1
	2006/42 CE-2014/30 UE- 2014/35 UE- 2000/14 e and subsequent modifications
	EN 13000:2014 ANSI/ASME B30.5-2011 and subsequent modifications



## Dimensions

