

JMG Cranes S.p.A.

Sales & Service Office

Via Bergamo, 142

26100 Cremona - Italy

t +39 0372 1786738

Production Plant

Via Sito Nuovo 14

29010 Sarmato (PC) - Italy

t +39 0523 8486

e info@jmgcranes.com



www.jmgcranes.com

Data subject to change without prior notice
Edition 04/2020 © 2020 JMG Cranes S.p.A. All rights reserved
Rev. 1 - 04/20



Electric Pick & Carry Cranes



MC 80.06 (metric)

Max Capacity 12,000 kg

Max Capacity Hydraulic Forks
8,000 kg

JMG[®]
movetosolution

MC 80.06

RADIO-REMOTE CONTROL ON DRIVING, STEERING, BOOM MOVEMENTS,
WINCH AND OTHER ACCESSORIES

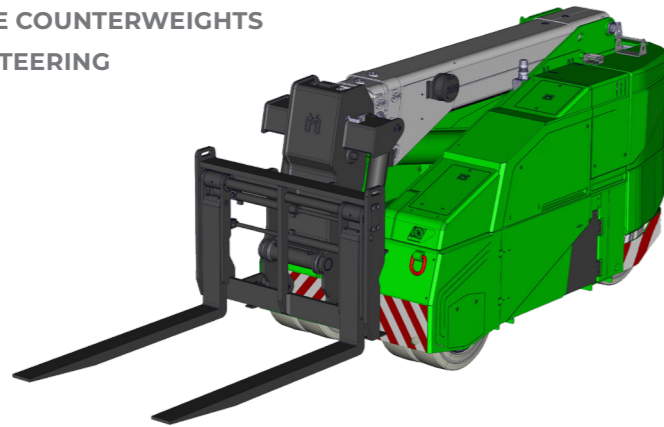
HYDRAULICALLY TELESCOPING
PROPORTIONAL TYPE BOOM

EXTENDIBLE REAR GROUP WITH REMOVABLE BALLAST


8 TON HYDRAULIC FORKS

REMOVABLE COUNTERWEIGHTS

180° REAR STEERING



Options :

- HYDRAULIC WINCH
- HYDRAULIC JIB WITH HYDRAULIC EXTENSION
- MANUALLY BENDABLE JIB WITH MANUAL EXTENSION
- NON-MARKING TIRES
- 9 TON HYDRAULIC FORKS
- EXTRA BALLASTS KG 700
- MAN BUCKET
-  ATEX CONVERSIONS
- CUSTOMIZED PAINTING



Technical features

Max
Capacity kg



12,000

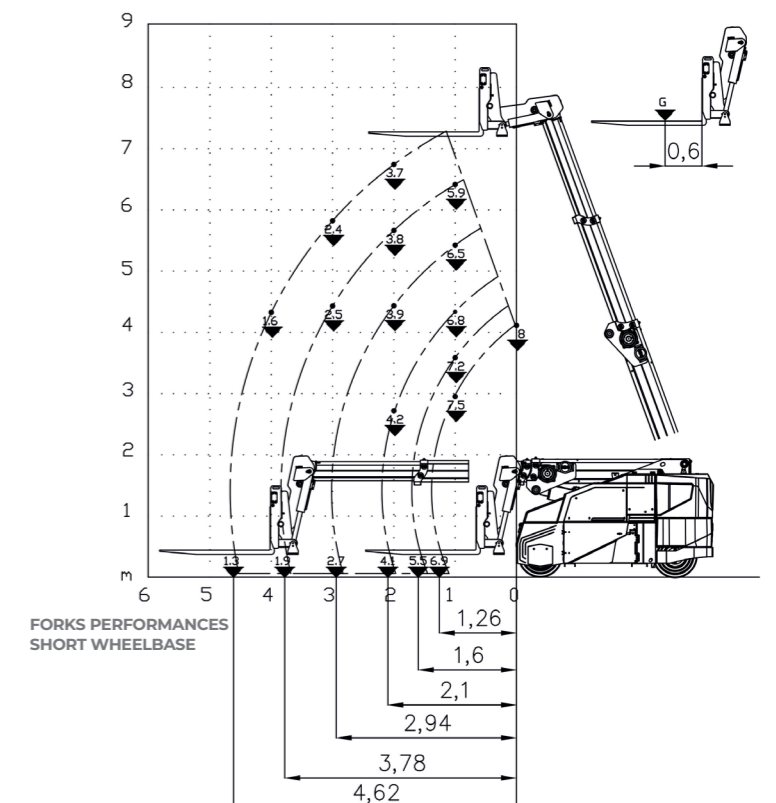
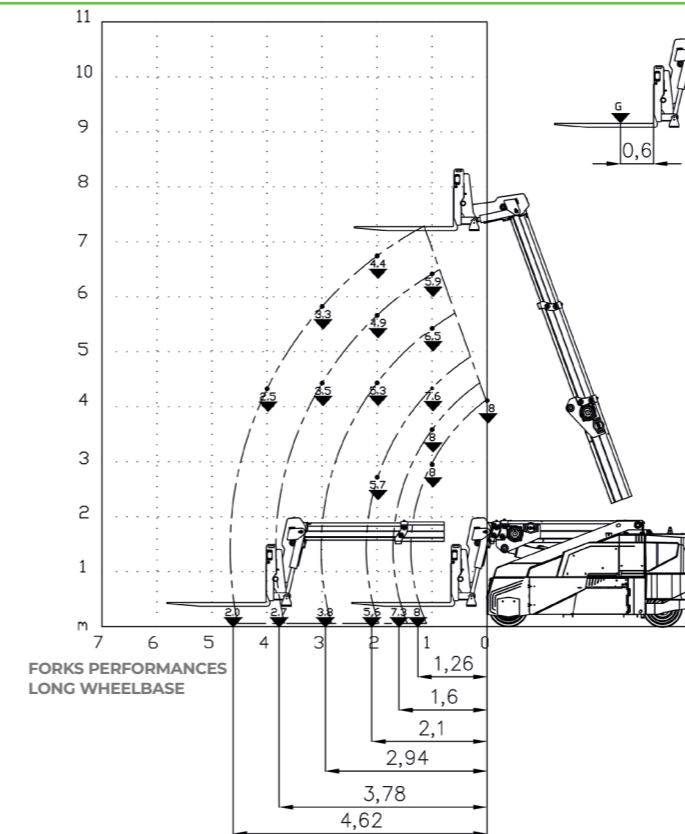
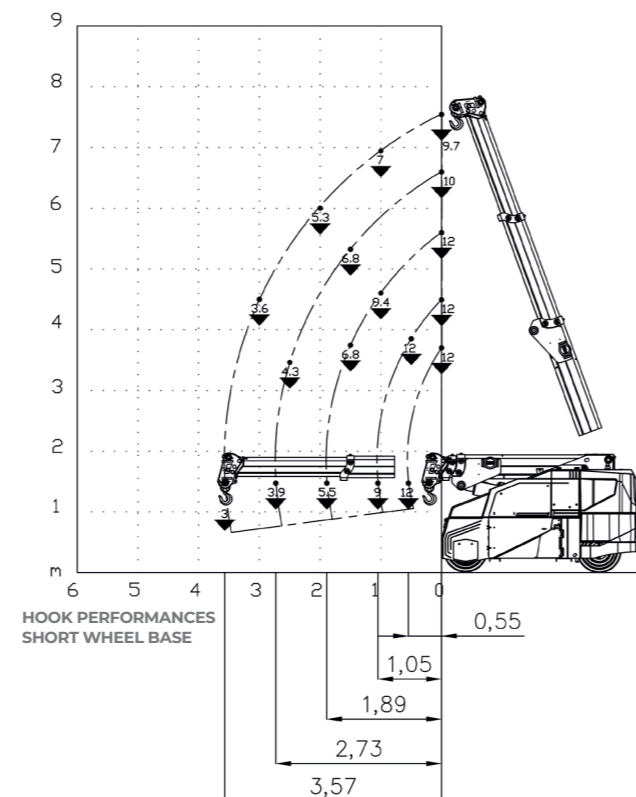
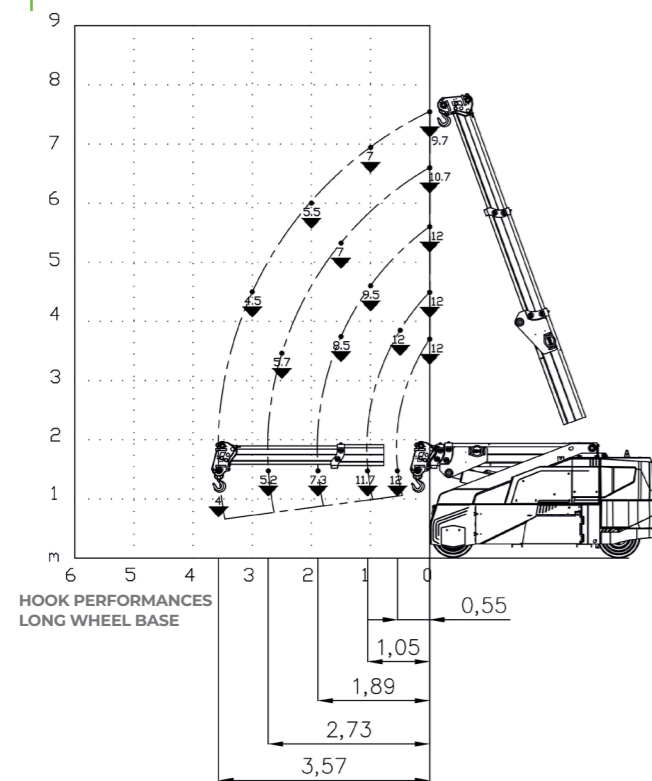
Dimensions
mm



3200x1500x1945

	Front-wheels drive. 2 electric motors AC 6,5 kW 80V Insulation class H		Electronic safe load indicator and tilting moment limiter
	Total Kg. 13,200 Removable counterweights Kg. 4,100		Automatic braking system on all wheels
	80 V - 810 Ah 8 working hours		Fabricated from preformed and welded quality steel plate
	Front nr. 4 superelastic 200-15" Rear nr. 2 superelastic 250-15"		+70°/-7°
	Rear Steering angle -90°/+90°		Motor driven pump 20 kW - 80 V Insulation class H

Load charts



EU Standards CE

	UNI ISO 4301-2: A1
	2006/42 CE-2014/30 UE- 2014/35 UE- 2000/14 e and subsequent modifications
	EN 13000:2014 ANSI/ASME B30.5-2011 and subsequent modifications



Dimensions

