

JMG Cranes S.p.A.

Sales & Service Office

Via Bergamo, 142

26100 Cremona - Italy

t +39 0372 1786738

Production Plant

Via Sito Nuovo 14

29010 Sarmato (PC) - Italy

t +39 0523 8486

e info@jmgcranes.com



Edition 04/2020 © 2020 JMG Cranes S.p.A. All rights reserved
Data subject to change without prior notice
Rev.1 - 04/20



Electric Pick & Carry Cranes



MC 50000RE

**Max Capacity
50.000 kg/m**

www.jmgcranes.com

JMG[®]
move to solution

MC 50000RE

CARRY DECK SLEWING CRANE WITH 360° CONTINUOUS AND UNLIMITED HYDRAULIC BOOM ROTATION

7 SEQUENTIAL EXTENSIONS ARTICULATED BOOM

4 INDEPENDENT EXTENDABLE OUTRIGGERS, FOLDABLE FOR TRANSPORTATION

FULLY RADIO-CONTROLLED

REMOVABLE COUNTERWEIGHTS

CAPACITY MAX. ON TIRES KG 7000

Optionals:

- 4 EXTENSIONS TILTABLE FLY JIB
- HYDRAULIC WINCH
- NON-MARKING TIRES
- ATEX CONVERSIONS
- CUSTOMIZED PAINTING

Static moment
max kg/m

50.000

Dimensions
mm

5130x2050x2810

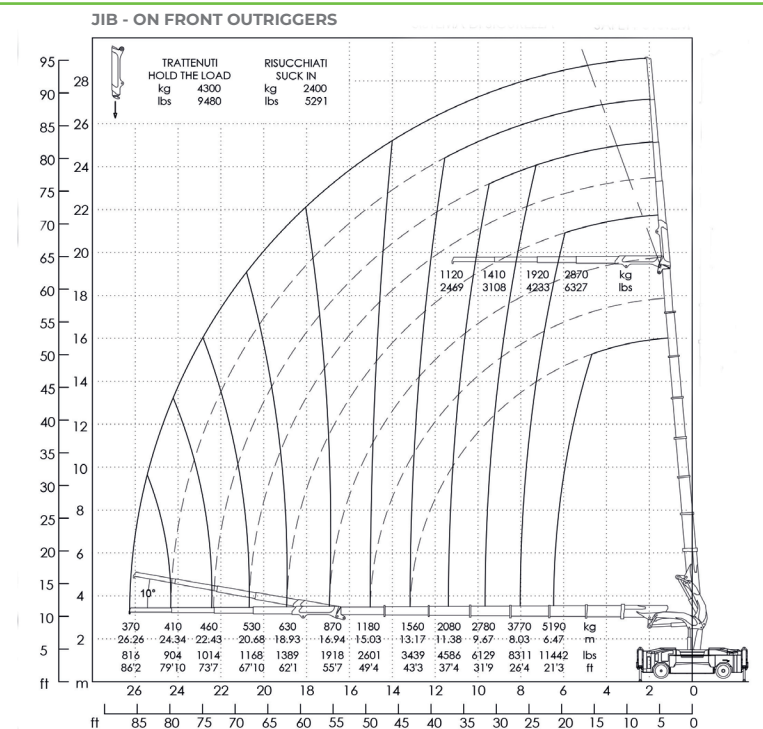
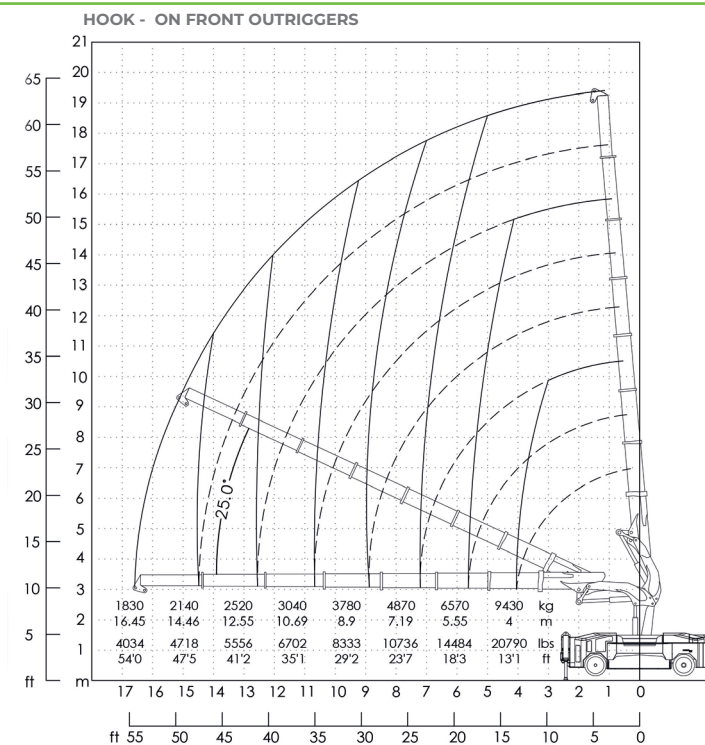


Load charts



Technical features

	Front-wheels drive. 2 electric motors 10 AC kW 26 V Insulation class H		Electric Load Moment Indicator System
	Total Kg. 22.000 Removable counterweights Kg. 2.000		Automatic braking system on front and rear wheels
	96 V -1240 Ah 8 working hours autonomy		Fabricated from preformed and welded steel plate
	Front n. 2 cushion 28x16x22 Rear n. 2 cushion 28x10x22		Boom inclination angle +85° Rotation time 360°/ 70 s
	Rear by steering axle. Steering angle -90°/+90°		Motor driven pump hydraulic system 16 kW - 96 V AC 35 kW - 96 V AC



EU Standards CE

	UNI ISO 4301-2: A1
	2006/42 CE-2014/30 UE- 2014/35 UE- 2000/14 e and subsequent modifications
	EN 13000:2014 ANSI/ASME B30.5-2011 and subsequent modifications



Dimensions

