

JMG Cranes S.p.A.

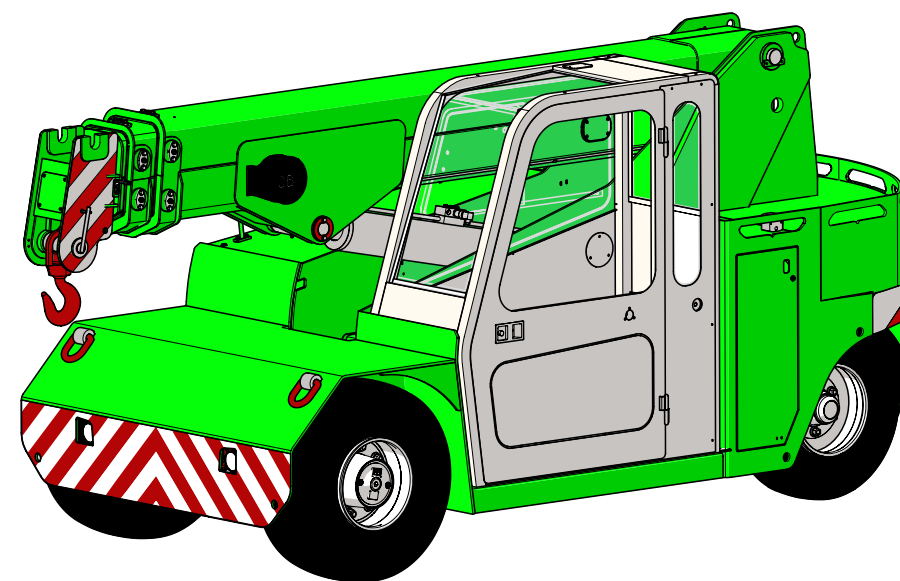
Via Sito Nuovo 14
29010 Sarmato (PC) - Italy
t +39 0523 8486
e info@jmgcranes.com



Data subject to change without prior notice
Edition 12/2019 © 2019 JMG Cranes S.p.A. All rights reserved



Electric Pick & Carry Cranes




MC 85 (metric)
Max Capacity 8,500 kg

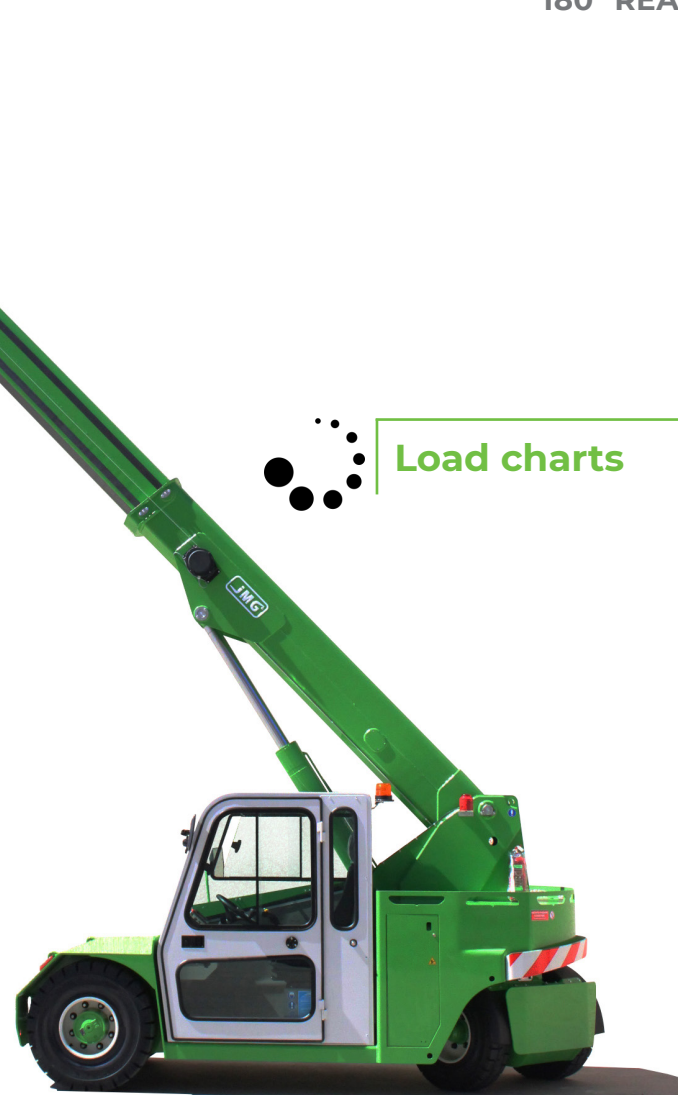
www.jmgcranes.com

JMG[®]
move to solution

HYDRAULICALLY TELESCOPING PROPORTIONALLY TYPE BOOM
FRONT-WHEELS DRIVE WITH COUNTER ROTATION
180° REAR STEERING

Options :



- HYDRAULIC WINCH
- HYDRAULIC JIB WITH HYDRAULIC EXTENSION
- BENDABLE MANUAL JIB WITH MANUAL EXTENSION
- NON-MARKING TIRES
- RADIO REMOTE CONTROL
- HYDRAULIC FORKS
- MAN BUCKET
-  ATEX CONVERSIONS
- CUSTOMIZED PAINTING

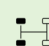






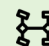
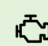


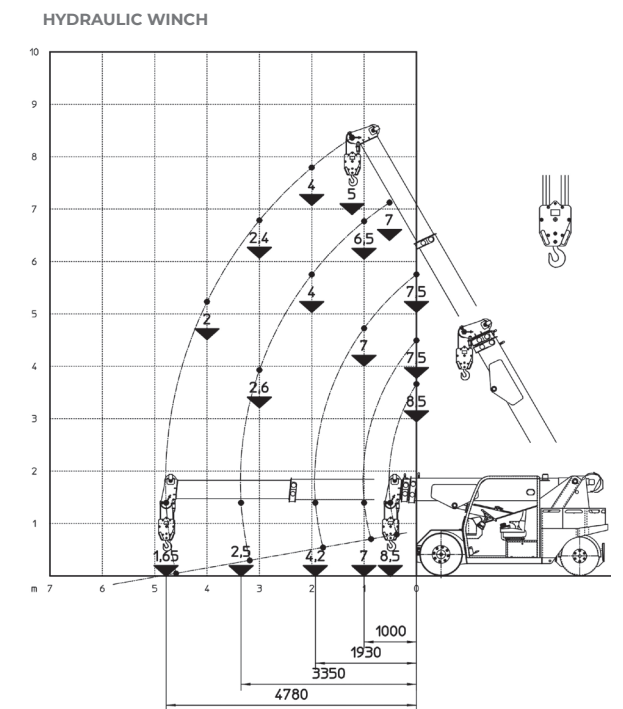
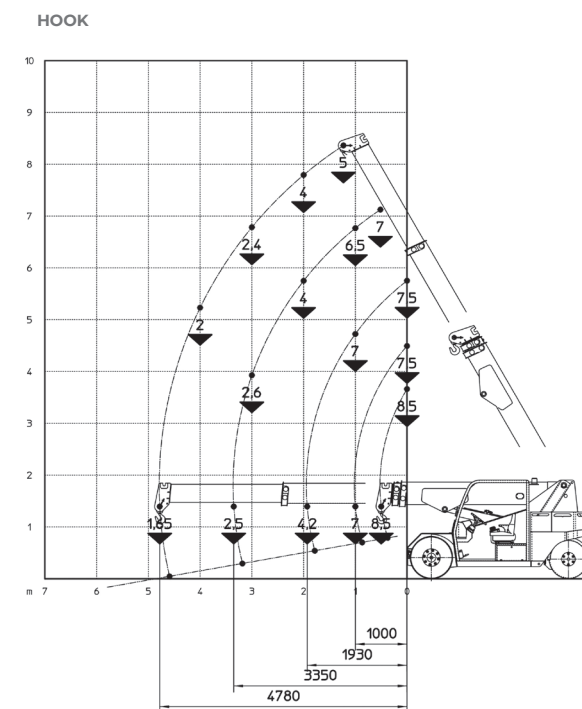
Load charts






Technical features

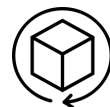
Max Capacity kg	 8,500
Dimension mm	 3655x1700x1900

	Front-wheels drive. 2 electric motors AC 7,5 kW 72V Insulation class H	LMI	Electronic safe load indicator and tilting moment limiter
	Total Kg. 9,070		Hydraulically foot controlled service brake on all wheels, hydraulically automatic or button controlled parking brake on front wheels
	72 V - 620 Ah 8 working hours		Fabricated from preformed and welded quality steel plate
	Front nr. 2 superelastic 355x65/15" Rear nr. 2 superelastic 7.50/15"		+60°/-15°
	Rear Steering angle -90°/+90°		Motor driven pump 1x16 kW-72 V AC



EU Standards CE

	UNI ISO 4030-1: A3
	2006/42 CE MD-2014/30 CE EMC - 2014/35 CE LVD - 2000/14 e and subsequent modifications
	EN 13000:2014 UNI ISO 4301-2:2011 and subsequent modifications



Dimensions

