

JMG Cranes S.p.A.

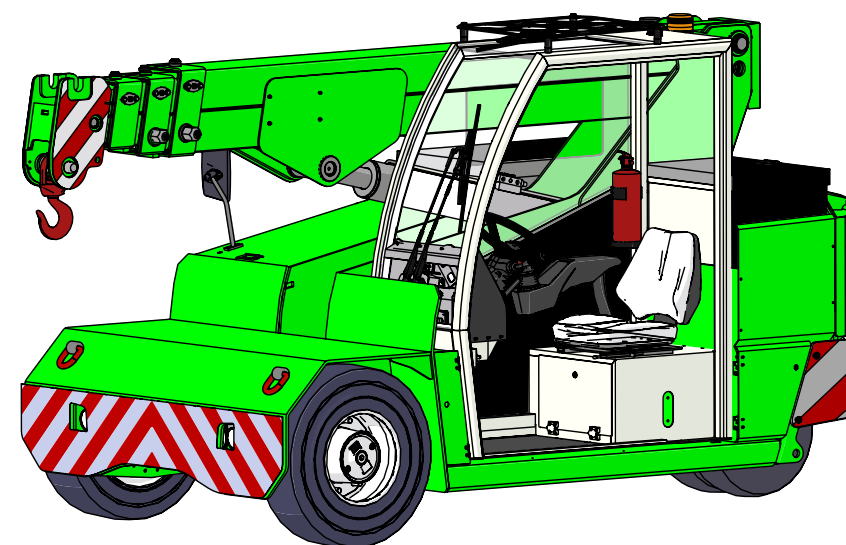
Via Sito Nuovo 14
29010 Sarmato (PC) - Italy
t +39 0523 8486
e info@jmgcranes.com



Data subject to change without prior notice
Edition 12/2019 © 2019 JMG Cranes S.p.A. All rights reserved



Electric Pick & Carry Cranes

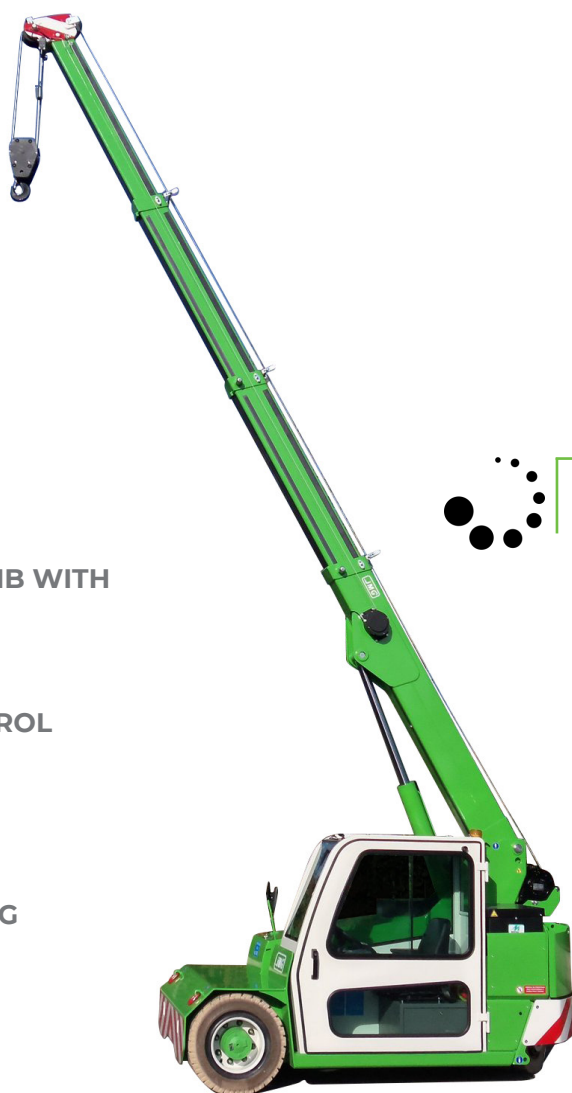


MC 60 (metric)
Max Capacity 6,000 kg

www.jmgcranes.com

JMG[®]
move to solution

HYDRAULICALLY TELESCOPING SEQUENTIAL TYPE BOOM
FRONT-WHEELS DRIVE WITH COUNTER ROTATION
180° REAR STEERING



Options :

- HYDRAULIC WINCH
- HYDRAULIC FLY JIB
- BENDABLE MANUAL JIB WITH MANUAL EXTENSION
- NON-MARKING TIRES
- RADIO REMOTE CONTROL
- HYDRAULIC FORKS
- MAN BUCKET
- ATEX CONVERSIONS
- CUSTOMIZED PAINTING



Load charts



Technical features

Max Capacity kg








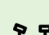
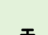


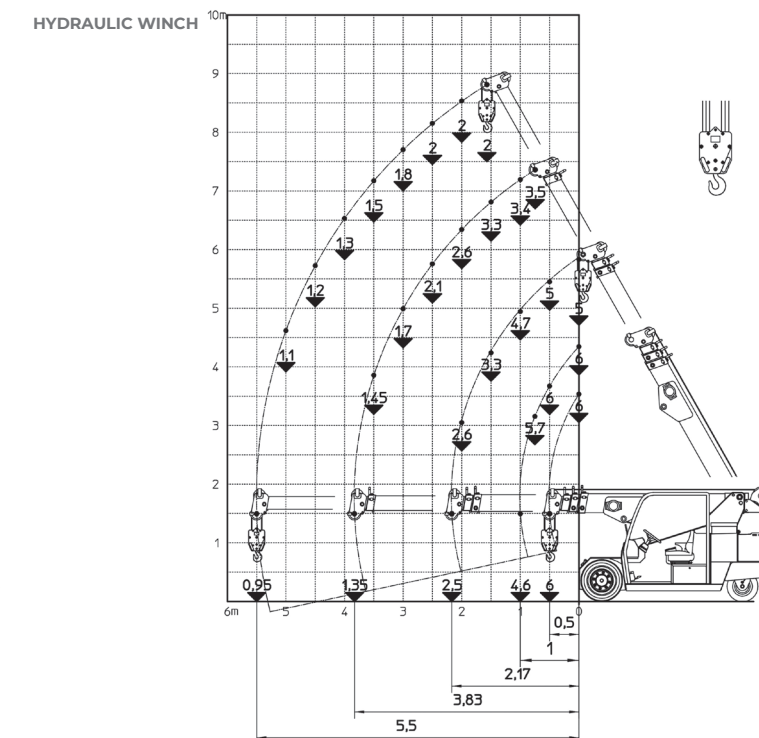
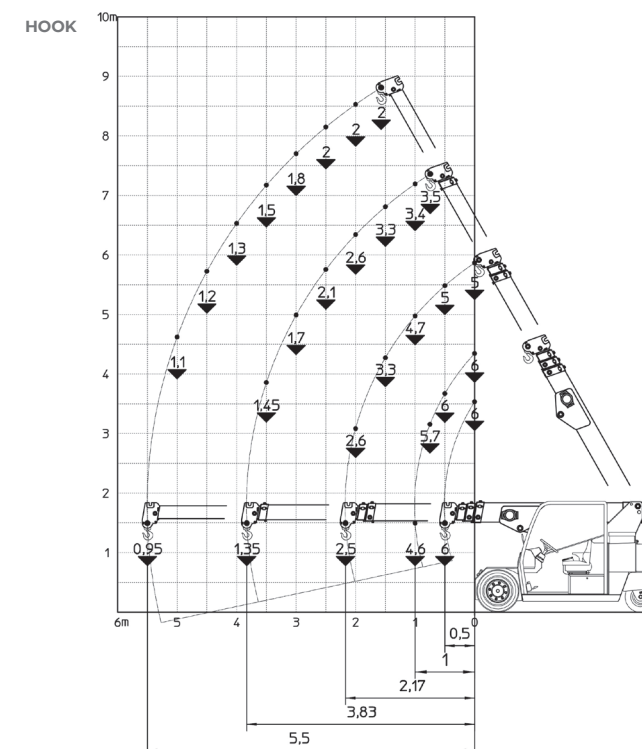
6,000

Dimension mm






3200x1650x1860

	Front-wheels drive. 2 electric motors AC 7,5 kW 72V Insulation class H	LMI	Electronic safe load indicator and tilting moment limiter
	Total Kg. 6,500		Hydraulically foot controlled service brake on all wheels, hydraulically automatic or button controlled parking brake on front wheels
	72 V - 575 Ah 8 working hours		Fabricated from preformed and welded quality steel plate
	Front nr. 2 superelastic 250-15" Rear nr. 2 superelastic 21x8-9-15"		+60°/-15°
	Rear Steering angle -90°/+90°		Motor driven pump 1x12 kW-72 V AC



EU Standards CE

	UNI ISO 4030-1: A3
	2006/42 CE MD-2014/30 CE EMC - 2014/35 CE LVD - 2000/14 e and subsequent modifications
	EN 13000:2014 UNI ISO 4301-2:2011 and subsequent modifications



Dimensions

