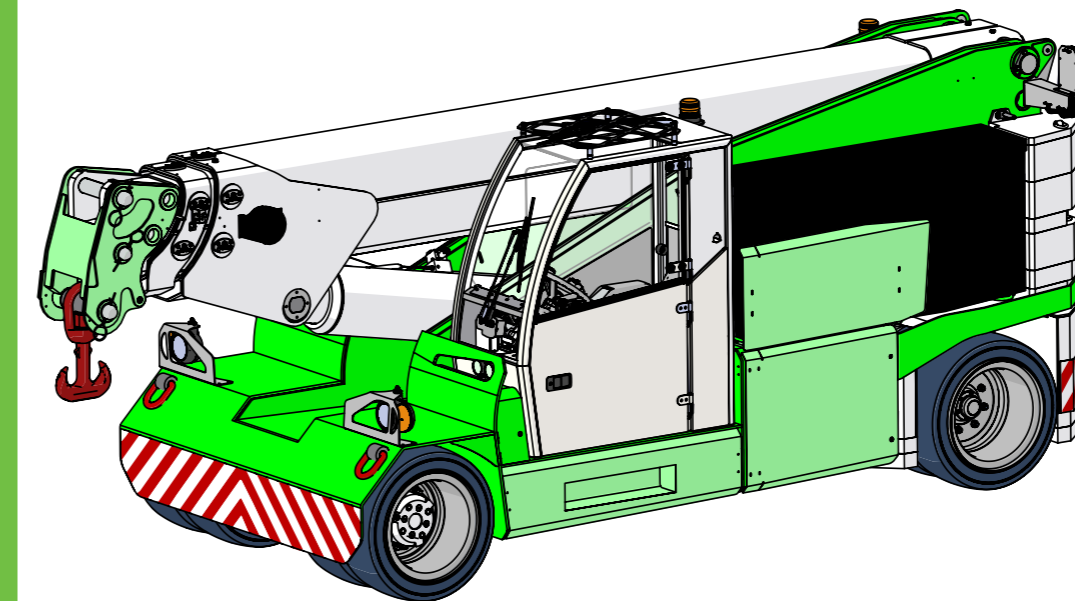


JMG Cranes S.p.A.

Via Sito Nuovo 14
29010 Sarmato (PC) - Italy
t +39 0523 8486
e info@jmgcranes.com



Data subject to change without prior notice
Edition 12/2019 © 2019 JMG Cranes S.p.A. All rights reserved



Electric
Pick & Carry
Cranes

MC 350 (metric)
Max Capacity
35,000 kg

www.jmgcranes.com

JMG[®]
move to solution


MC 350

FRONT-WHEELS DRIVE WITH COUNTER ROTATION
HYDRAULICALLY TELESCOPING PROPORTIONAL TYPE BOOM

180° REAR STEERING

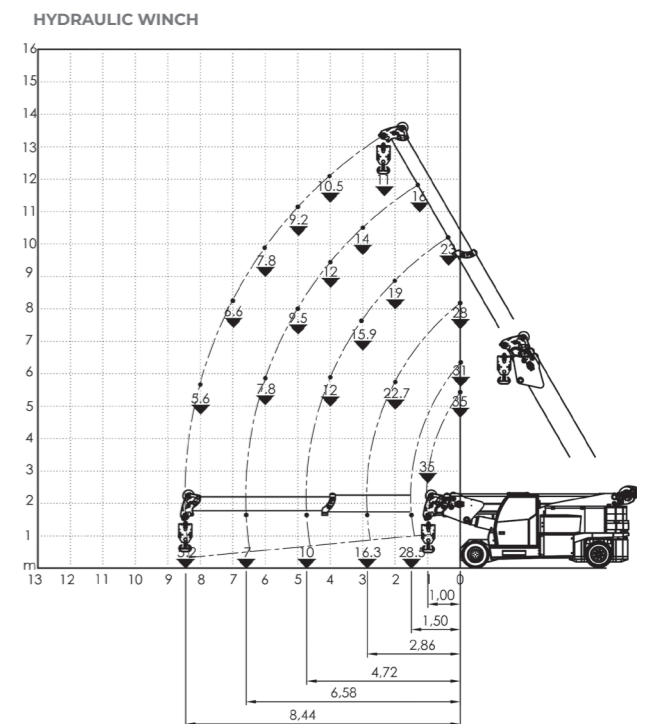
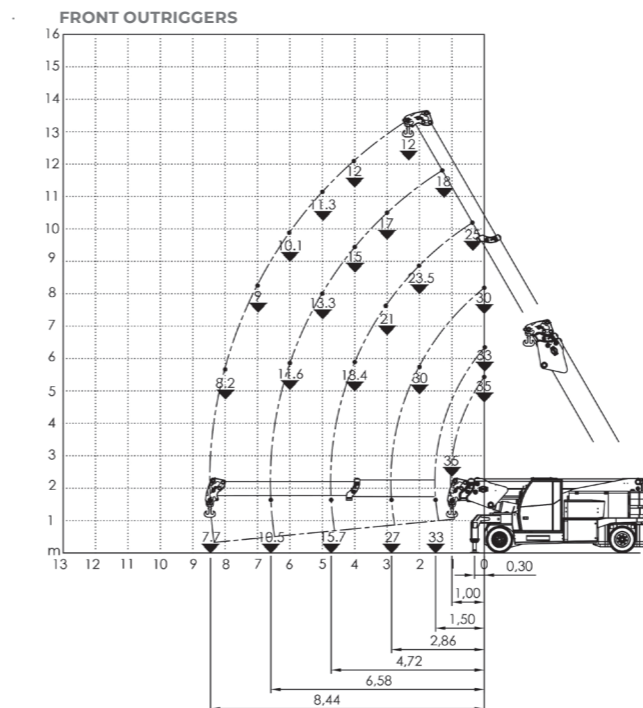
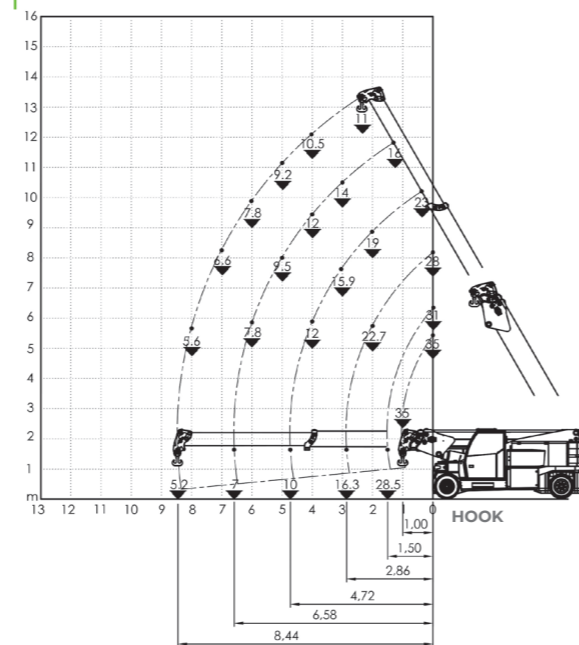
REMOVABLE COUNTERWEIGHTS

Options :



- HYDRAULIC WINCH
- HYDRAULIC JIB WITH HYDRAULIC EXTENSION
- BENDABLE MANUAL JIB WITH MANUAL EXTENSION
- NON-MARKING TIRES
- FRONT OUTRIGGERS
- RADIO REMOTE CONTROL
- HYDRAULIC FORKS
- MAN BUCKET
-  ATEX CONVERSIONS
- CUSTOMIZED PAINTING








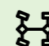
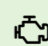


Load charts






Technical features

Max Capacity kg	 35,000
Dimensions mm	 5170x2250x2295

	Front-wheels drive. 2 electric motors AC 12 kW 96V Insulation class H	LMI	Electronic safe load indicator and tilting moment limiter
	Total Kg. 30,800 Removable counterweights Kg. 7,150		Hydraulically foot controlled service brake on all wheels, hydraulically automatic or button controlled parking brake on front wheels
	96 V - 1395 Ah 8 working hours		Fabricated from preformed and welded quality steel plate
	Front nr. 4 superelastic 355/50-20" Rear nr. 4 superelastic 355/50-20"		+60°/-7°
	Rear Steering angle -90°/+90°		Motor driven pump 1x35 kW - 96 V AC, 1x23 kW - 96 AC.



EU Standards CE

	UNI ISO 4030-1: A3
	2006/42 CE MD-2014/30 CE EMC - 2014/35 CE LVD - 2000/14 e and subsequent modifications
	EN 13000:2014 UNI ISO 4301-2:2011 and subsequent modifications



Dimensions

