

JMG Cranes S.p.A.

Sales & Service Office

Via Bergamo, 142

26100 Cremona - Italy

t +39 0372 1786738

Production Plant

Via Sito Nuovo 14

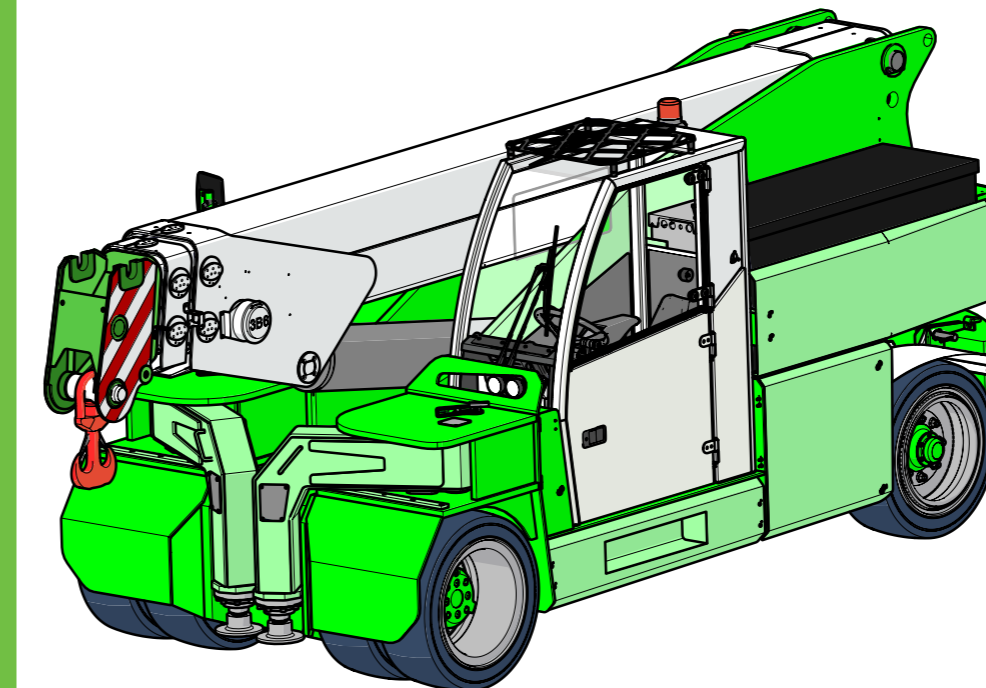
29010 Sarmato (PC) - Italy

t +39 0523 8486

e info@jmgcranes.com



Data subject to change without prior notice
Edition 04/2020 © 2020 JMG Cranes S.p.A. All rights reserved
Rev. 1 - 04/2020



Electric
Pick & Carry
Cranes


MC 250 (metric)
Max Capacity 25,000 kg

www.jmgcranes.com

JMG[®]
move to solution

HYDRAULICALLY TELESCOPING PROPORTIONAL TYPE BOOM
FRONT-WHEELS DRIVE WITH COUNTER ROTATION
180° REAR STEERING
REMOVABLE COUNTERWEIGHTS

Options :

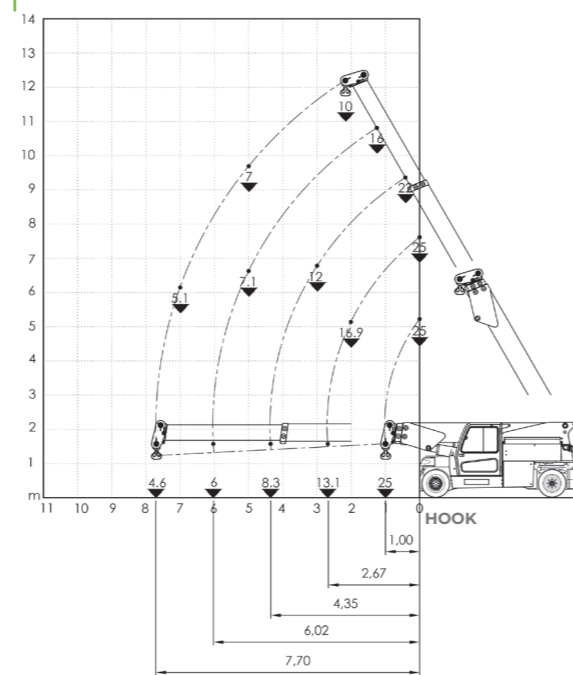
- HYDRAULIC WINCH
- HYDRAULIC JIB WITH HYDRAULIC EXTENSION
- BENDABLE MANUAL JIB WITH MANUAL EXTENSION
- NON-MARKING TIRES
- FRONT OUTRIGGERS
- RADIO REMOTE CONTROL
- HYDRAULIC FORKS
- MAN BUCKET
-  ATEX CONVERSIONS
- CUSTOMIZED PAINTING



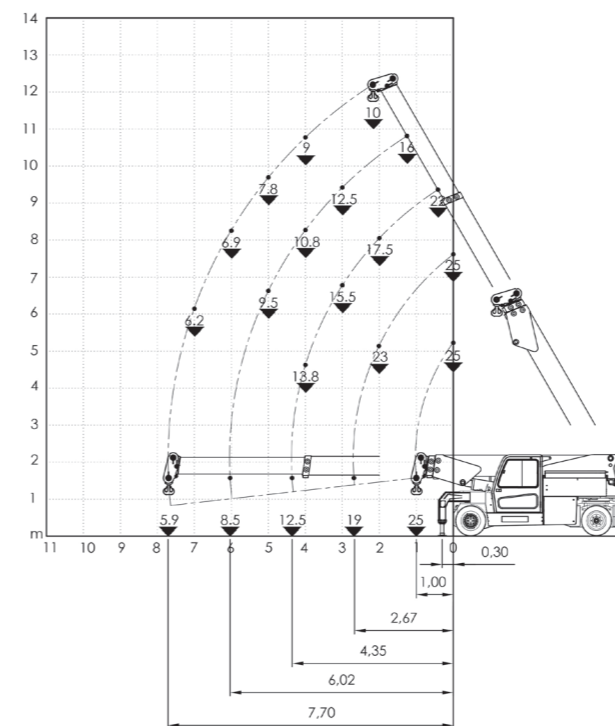
Technical features

Max Capacity kg		25,000		Total Kg. 25,500 Removable counterweights Kg. 4,400		Hydraulically foot controlled service brake on all wheels, hydraulically automatic or button controlled parking brake on front wheels		
	Dimensions mm			4770X2150X2200			96 V - 1125 Ah 8 working hours	
						Front nr. 4 superelastic 355/50-20" Rear nr. 2 superelastic 355/50-20"		+60°/-7°
						Rear Steering angle -90°/+90°		Motor driven pump 1x23 kW - 96 V AC.

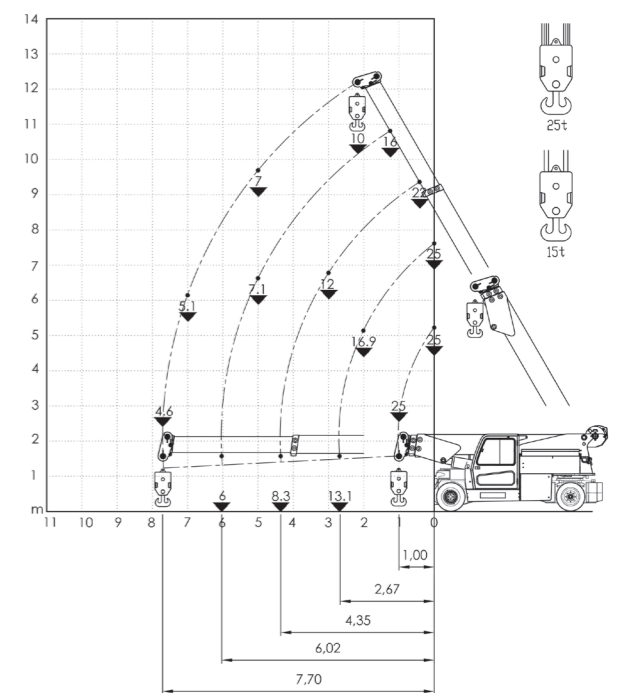
Load charts





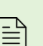
FRONT OUTRIGGERS



HYDRAULIC WINCH



EU Standards CE

	UNI ISO 4301-2: A1
	2006/42 CE-2014/30 UE- 2014/35 UE- 2000/14 and subsequent modifications
	EN 13000:2014 ANSI/ASME B30.5-2011 and subsequent modifications



Dimensions

