

JMG Cranes S.p.A.

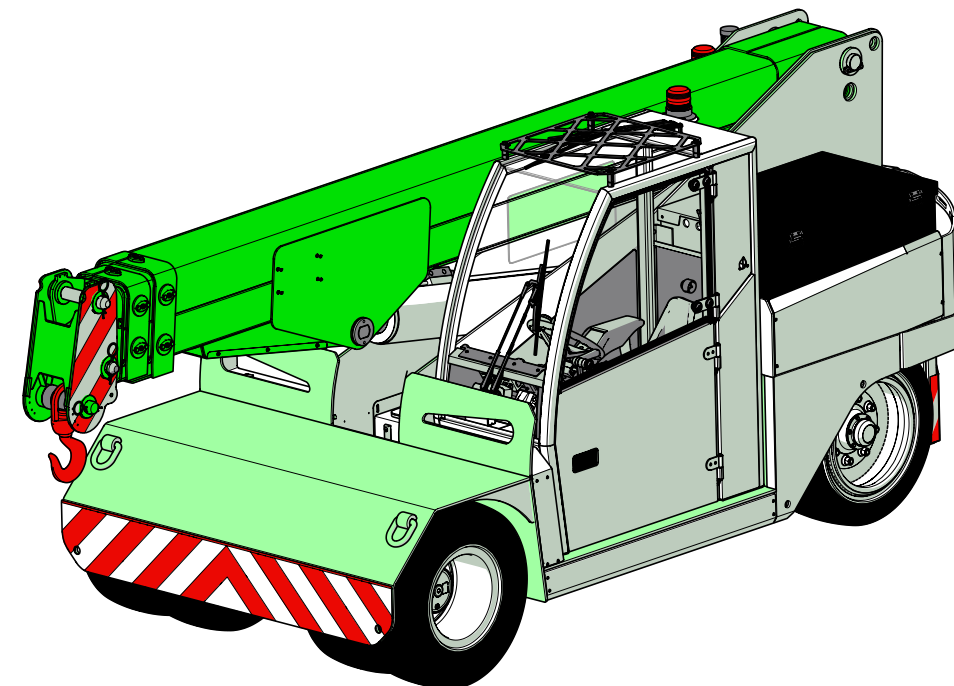
Via Sito Nuovo 14
29010 Sarmato (PC) - Italy
t +39 0523 8486
e info@jmgcranes.com



Data subject to change without prior notice
Edition 12/2019 © 2019 JMG Cranes S.p.A. All rights reserved



Electric Pick & Carry Cranes



MC 110 (metric)
Max Capacity 11,000 kg


www.jmgcranes.com

JMG[®]
move to solution

HYDRAULICALLY TELESCOPING PROPORTIONALLY TYPE BOOM
FRONT-WHEELS DRIVE WITH COUNTER ROTATION
REMOVABLE COUNTERWEIGHTS
180° REAR STEERING












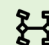
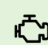
Options :

- HYDRAULIC WINCH
- HYDRAULIC JIB WITH HYDRAULIC EXTENSION
- BENDABLE MANUAL JIB WITH MANUAL EXTENSION
- NON-MARKING TIRES
- RADIO REMOTE CONTROL
- HYDRAULIC FORKS
- MAN BUCKET
-  ATEX CONVERSIONS
- CUSTOMIZED PAINTING



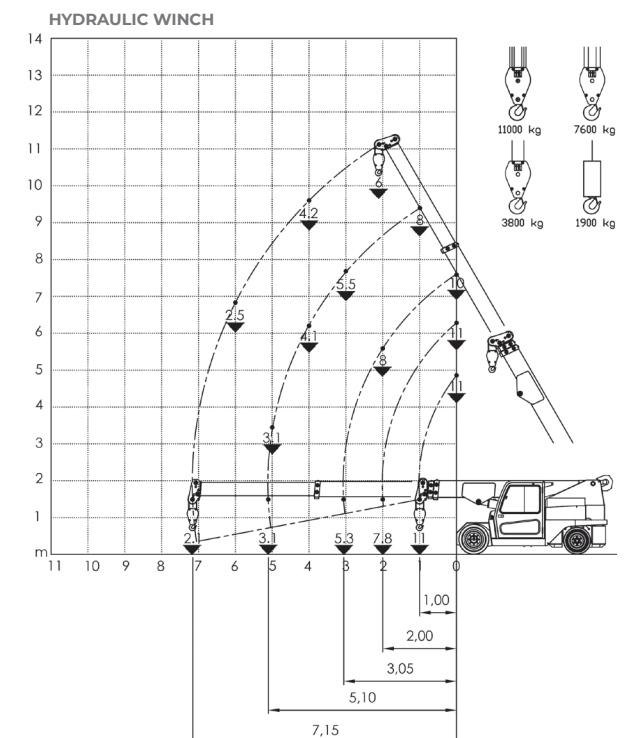
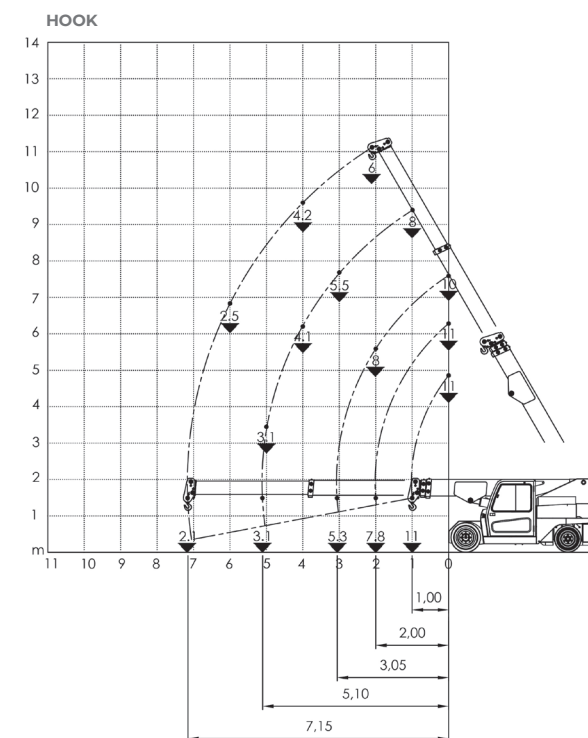
Technical features

Max Capacity kg	 11,000
Dimension mm	 4020x1950x2000



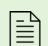
	Front-wheels drive. 2 electric motors AC 7,5 kW 80V Insulation class H	LMI	Electronic safe load indicator and tilting moment limiter
	Total Kg. 13,450 Removable counterweights Kg. 3,000		Hydraulically foot controlled service brake on all wheels, hydraulically automatic or button controlled parking brake on front wheels
	80 V - 840 Ah 8 working hours		Fabricated from preformed and welded quality steel plate
	Front nr. 4 superelastic 300-15" Rear nr. 2 superelastic 250-15"		+60°/-8°
	Rear Steering angle -90°/+90°		Motor driven pump 1x16 kW-80 V AC



Load charts



EU Standards CE

	UNI ISO 4030-1: A3
	2006/42 CE MD-2014/30 CE EMC - 2014/35 CE LVD - 2000/14 e and subsequent modifications
	EN 13000:2014 UNI ISO 4301-2:2011 and subsequent modifications



Dimensions

