

LETS MAKE
ZERO-EMISSION REAL

RentalMatch.eu

RentalMatch Green Power
Dealer & Partner of JMG Cranes

Sales & Service Office
Ecologieweg 16
3343 LM Hendrik-Ido-Ambacht - Netherlands
+31 (0) 78 204 92 60
info@rentalmatch.eu

Gijs van de Graaf
+31 651855113

Dick van de Graaf
+31 613214166

Production Plant
Via Sito Nuovo 14
29010 Sarmato (PC) - Italy



vca✓

**RentalMatch**
GREEN POWER

Electric
Pick & Carry
Cranes



MC 650 (metric)

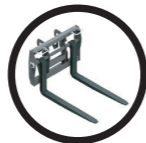
Max Capacity 65.000 kg

MC 650

- ✓ Front-wheels drive with counter rotation
- ✓ Hydraulically telescoping proportional type boom
- ✓ n° 2 independent steering groups
- ✓ Self-loading/unloading of ballasts
- ✓ 3-Position tilting mechanical boom head

Options:

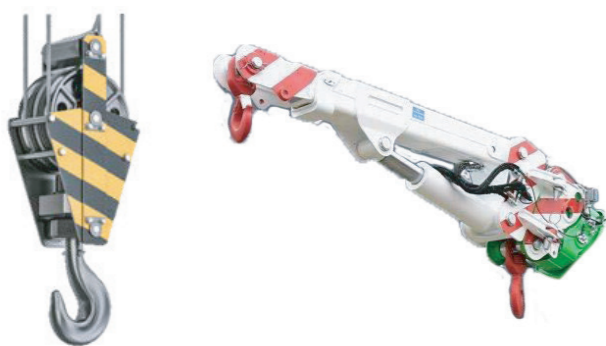
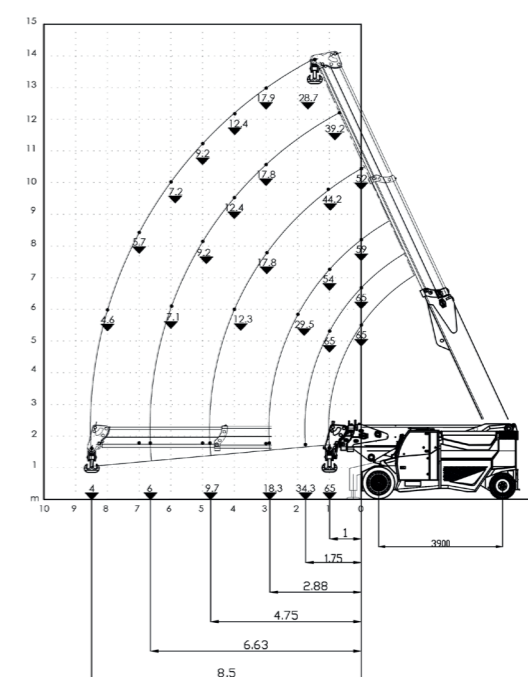
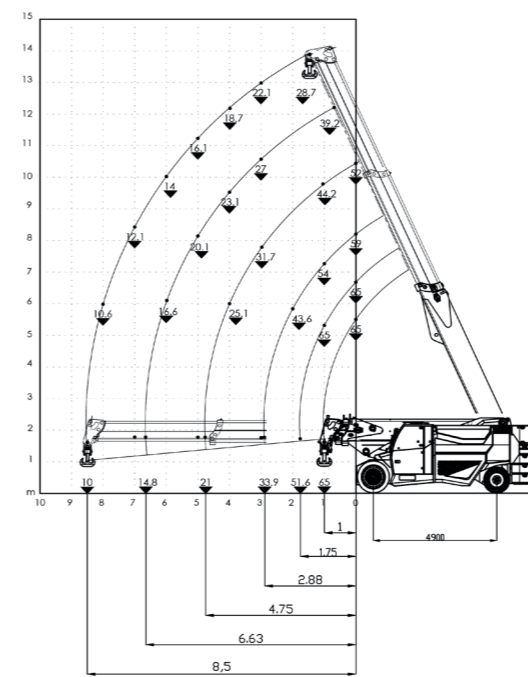
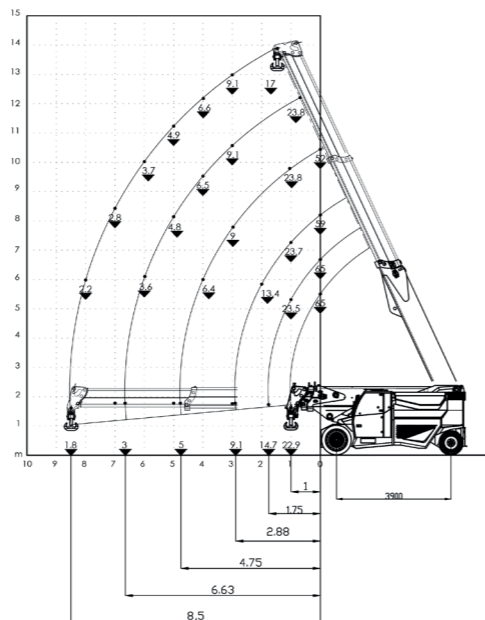
- 55 T hydraulic winch with 10° pull
- Front outriggers removable
- Non-marking tires
- Radio remote control
- Atex conversation
- Customized painting



Technical features

Max Capacity kg	65.000	Front-wheels drive. 2 electric motors AC 16 kW 96V AC. Insulation class H	LMI. Electronic safe load indicator and tilting moment limiter
	Dimensions mm	Total Kg. 45.000 Removable counterweights Kg. 17.500	Hydraulically foot controlled service brake on all wheels, hydraulically automatic or button controlled parking brake on front wheels
Dimensions mm		96 V - 1550 Ah 8 working hours	Fabricated from preformed and welded quality steel plate
	Dimensions mm	Front n° 4 cushion: n 2° 40x20-30" n 2° 40x12-30 Rear n.4 cushion 840x356x559	+65°/-5°
Dimensions mm		Rear Steering angle -90°/+90°	Motor dive pump 2x 35 kW - 96 V AC. Insulation class H.

Load charts



EU Standards CE

	UNI ISO 4301-1: A1
	2006/42 CE-2014/30 UE-2014/35 UE- 2000/14 and subsequent modifications
	EN 13000:2014 ANSI/ASME B30.5-2011 and subsequent modifications

Dimensions

